



GDR SCIENCES DU BOIS

13È JOURNÉES SCIENTIFIQUES

20 AU 22 NOVEMBRE 2024
ESB | NANTES

La Xylothèque dans l'évolution



Paul Corbineau
Fabien Clément

Natalia Cuevas

Julia Buchner

Nima Saedlou

Nicola Macchioni

Tahiana

Ramananantoandro

Nils Lefeuvre

Franck Michaud



Conteur sur bois !

Fabien Clément

Mathilde Monachon

Domingo Martin

Jean-François Foucault

Erwan Le Gall

Cyrille Mengin

Edouard Martin

Ronan Bézier La
Fosse

Benoît Martin

SAVOIR & FAIRE : LE BOIS

« Connaître, reconnaître et nommer le bois » Editions Actes Sud

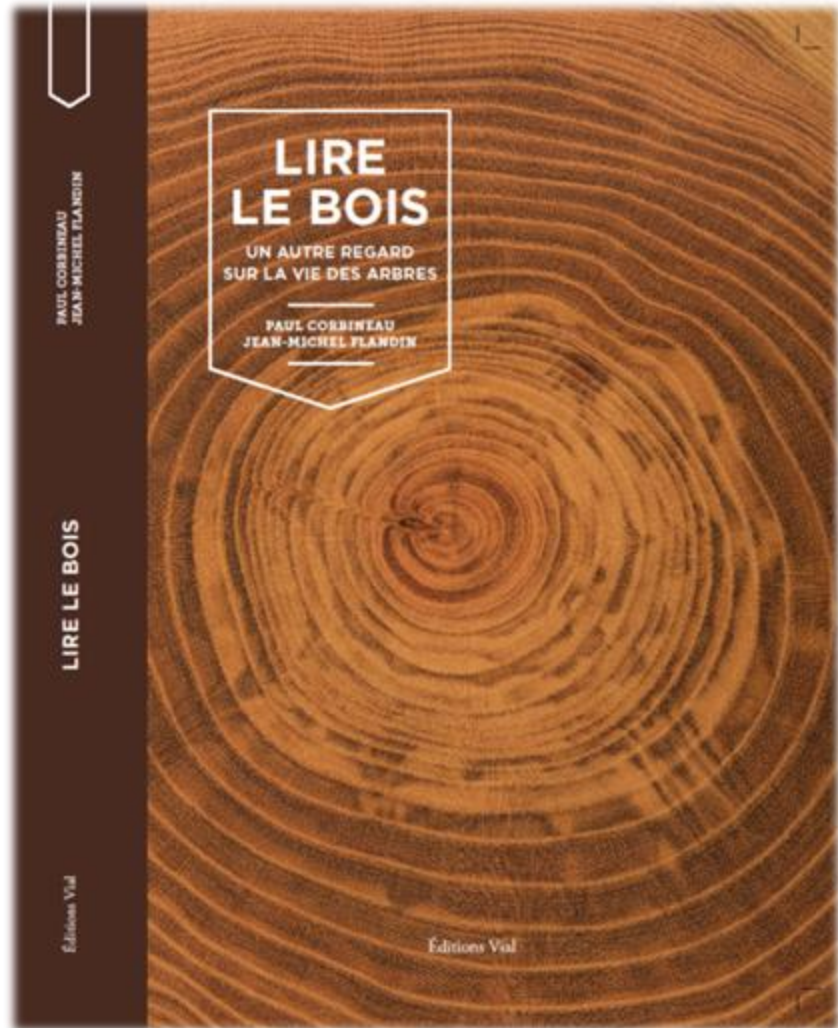


Photographie: Wilfried BEAUJOUAN

Microscopie



Macroscopie



PAUL CORBINEAU
JEAN-MICHEL FLANDIN

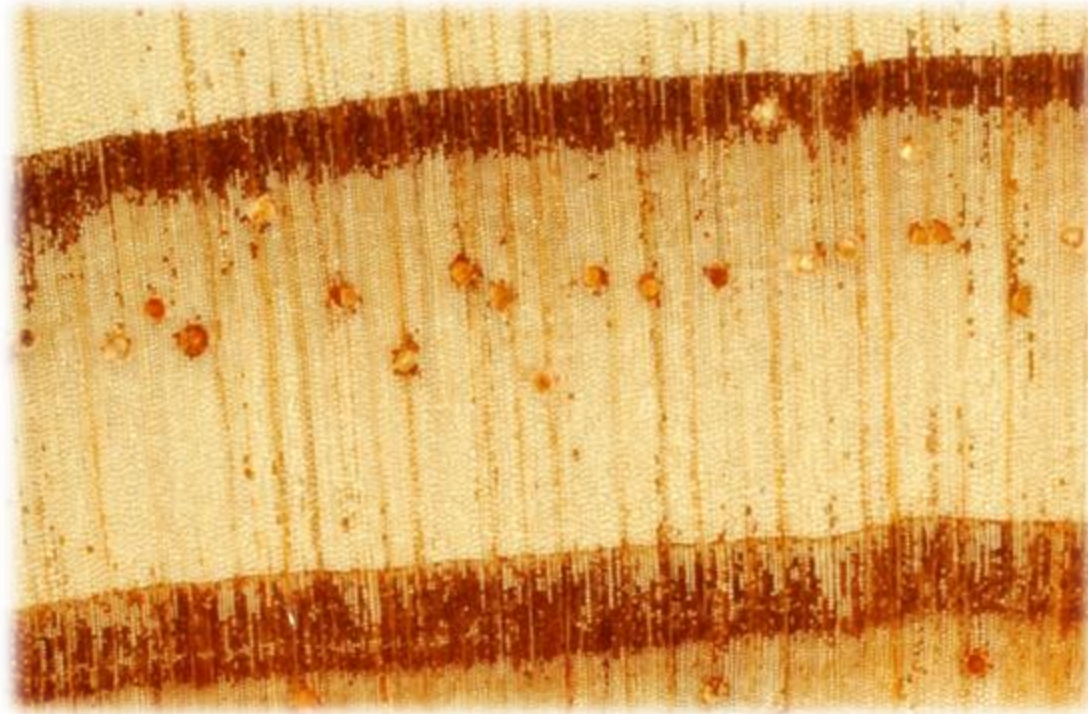
LIRE LE BOIS

Editions Val

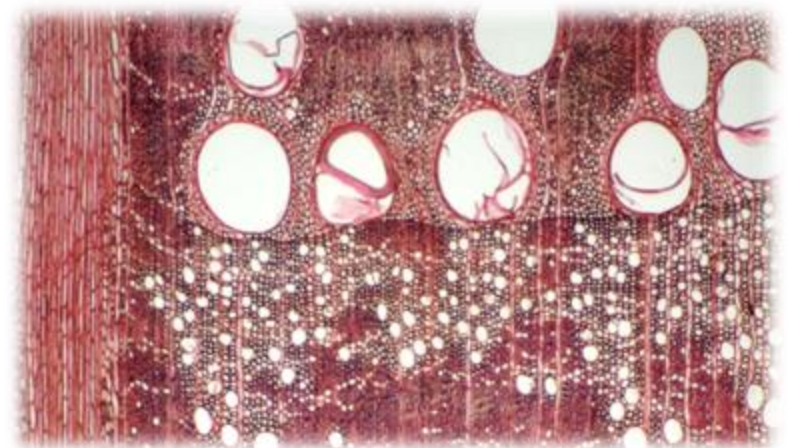
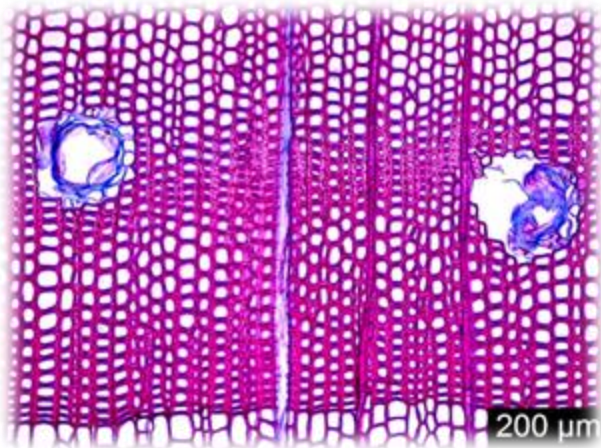
**LIRE
LE BOIS**
UN AUTRE REGARD
SUR LA VIE DES ARBRES
PAUL CORBINEAU
JEAN-MICHEL FLANDIN

Editions Val

Pin maritime « *Pinus pinaster* » x 20



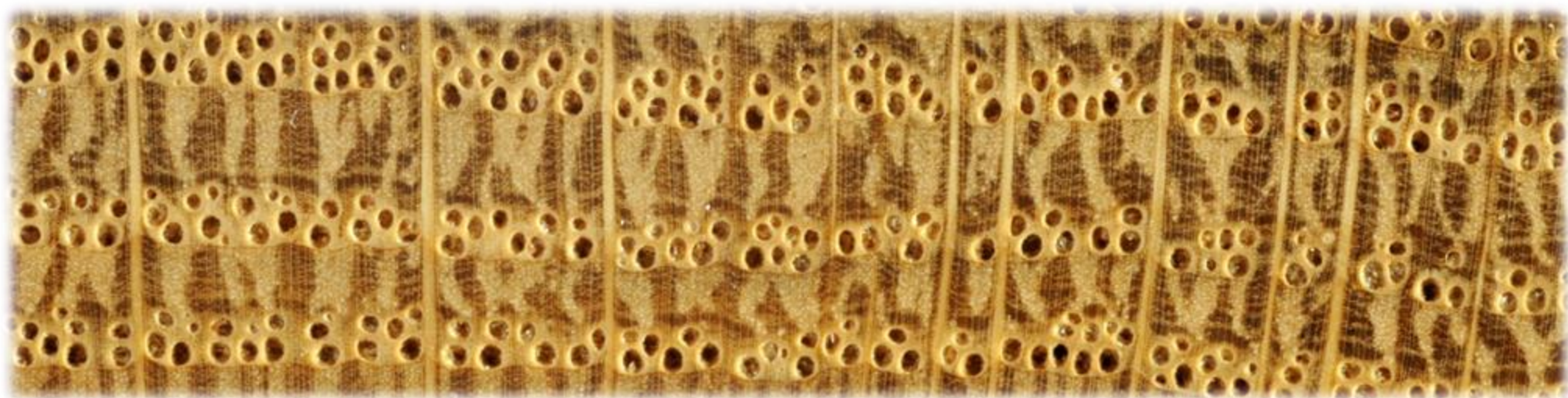
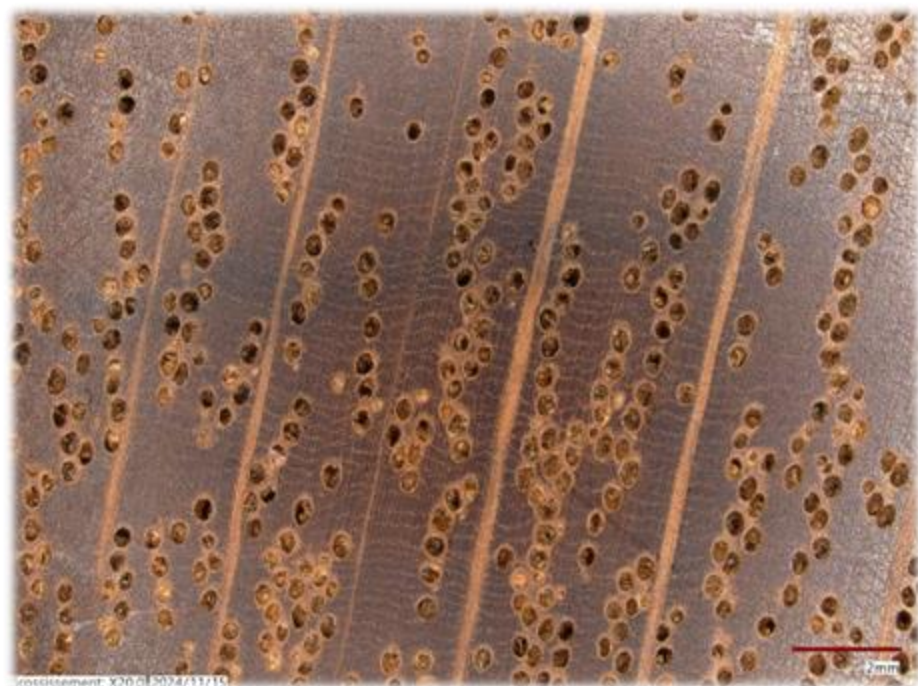
Chêne « *Quercus petraea* » x 20



Microscopie



Macroscopie

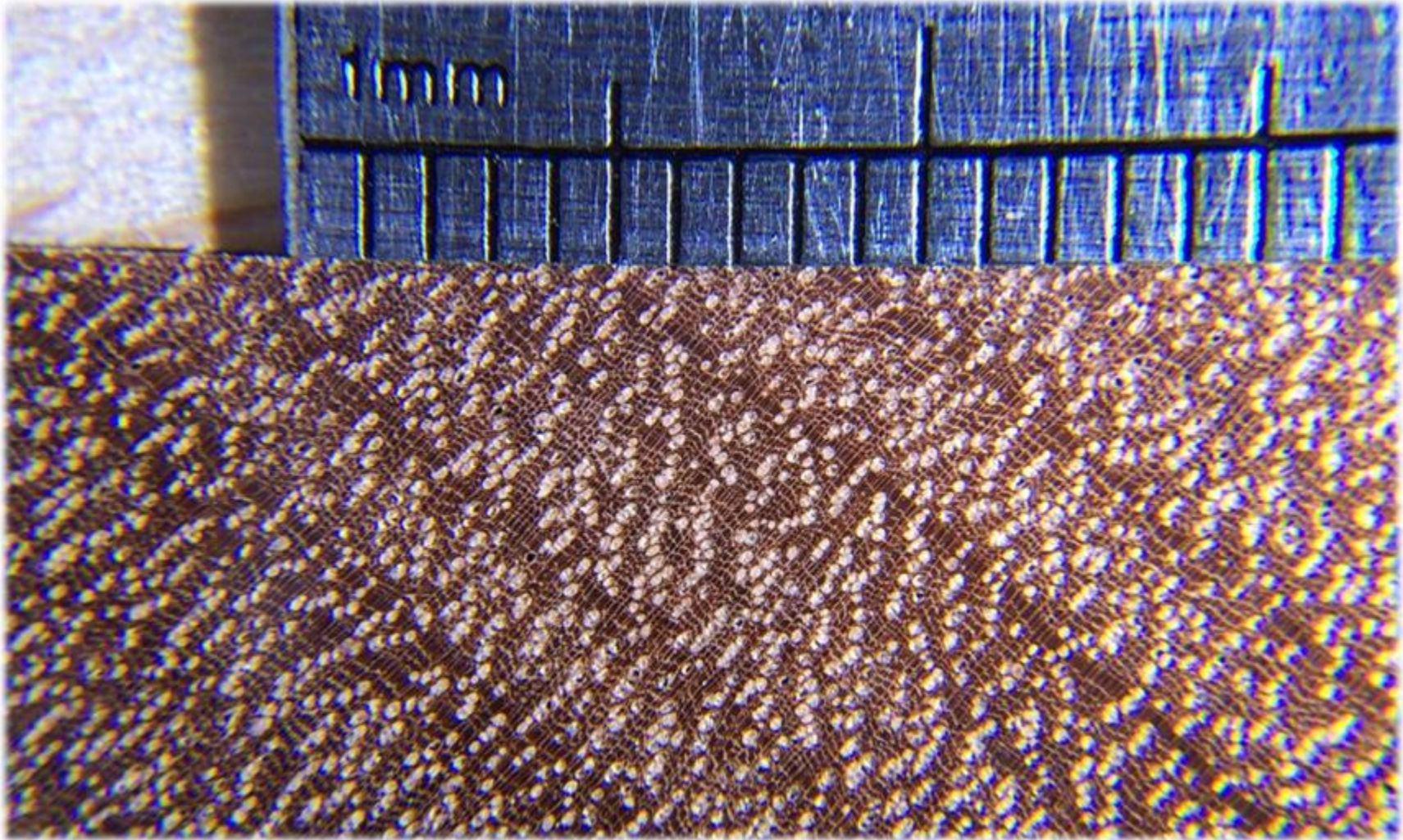


L'évolution



Erable sycomore
« *Acer*
pseudoplatanus »
SAPINDACEES

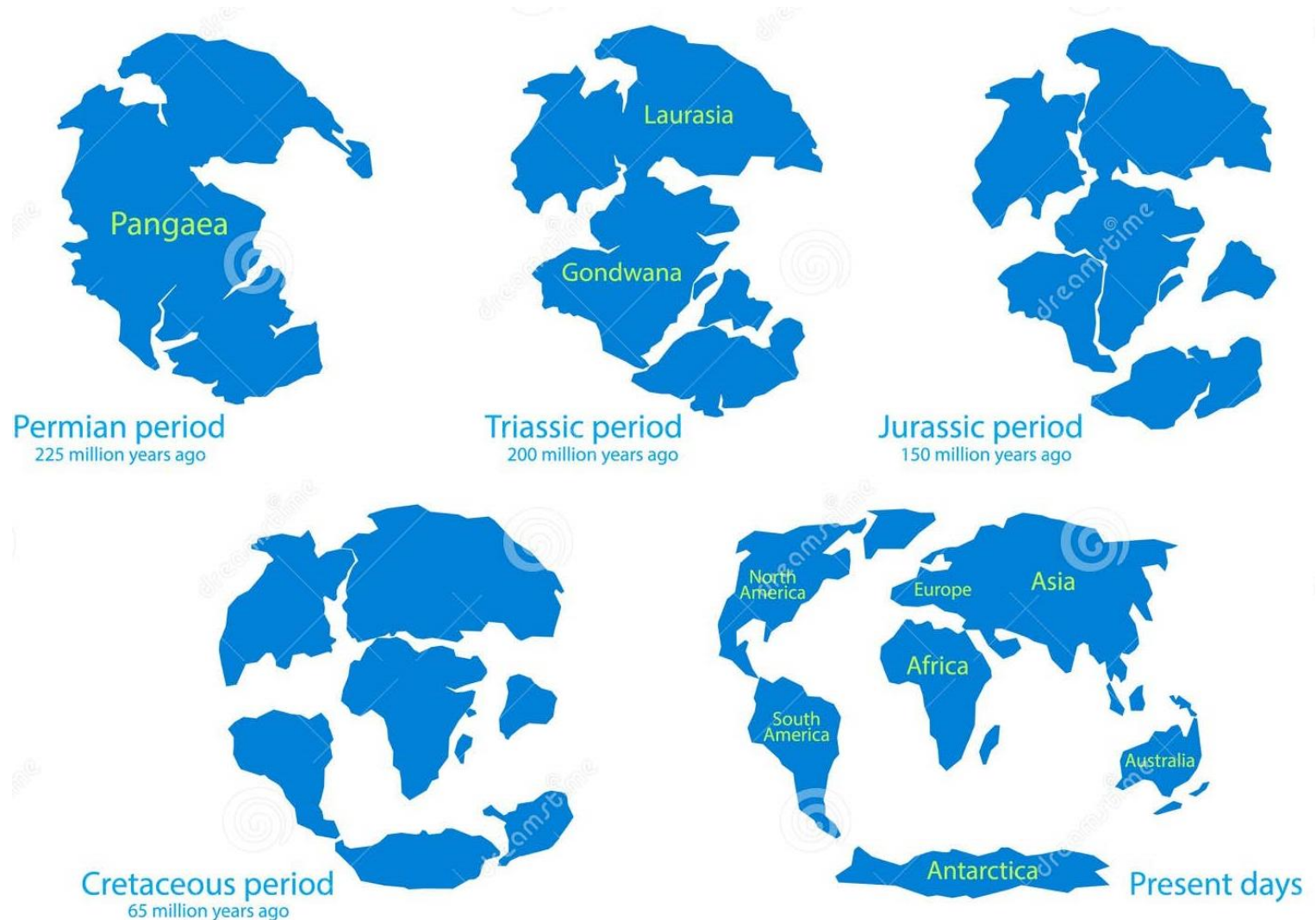


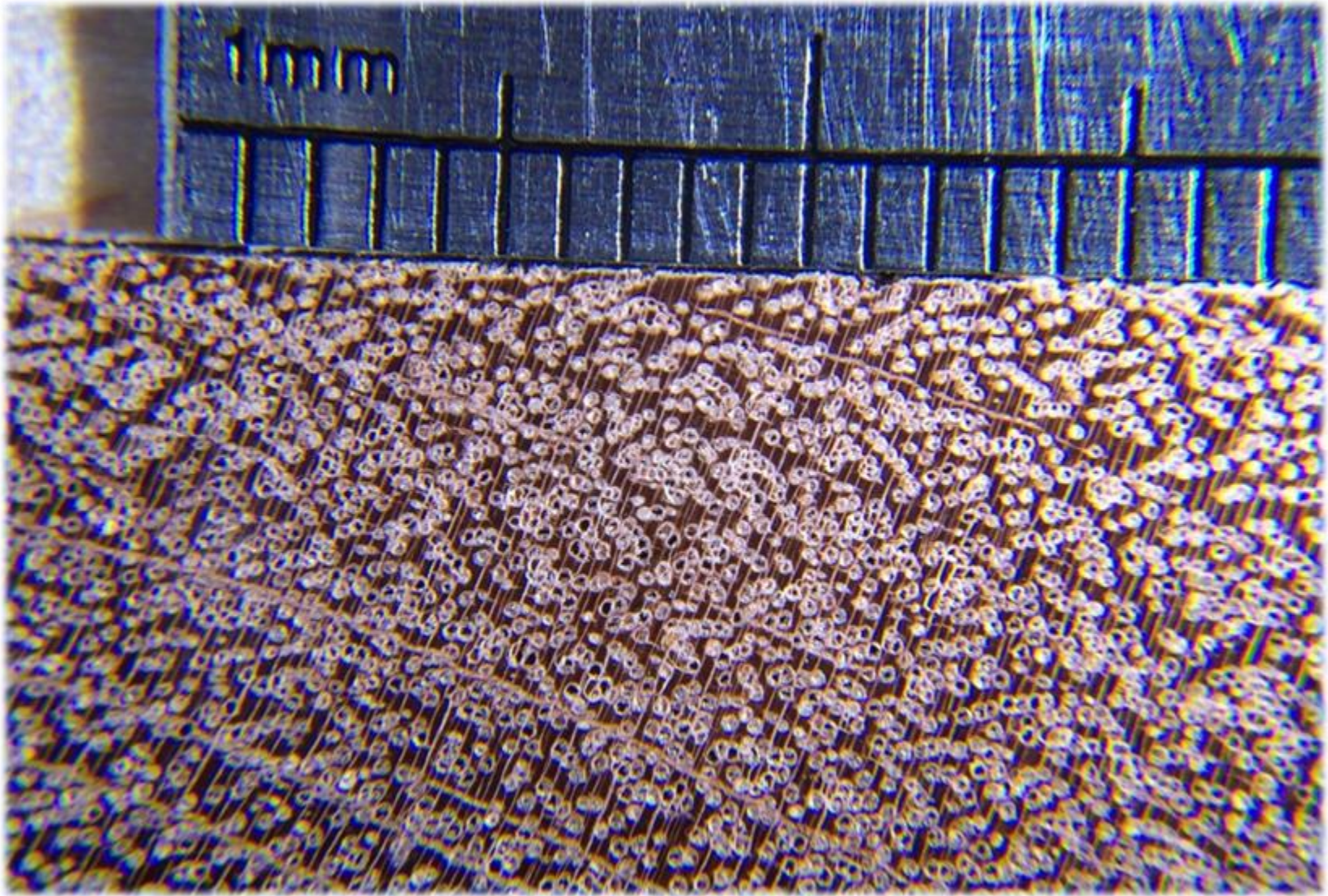


Moabi « *Baillonella toxisperma* » SAPOTACEES

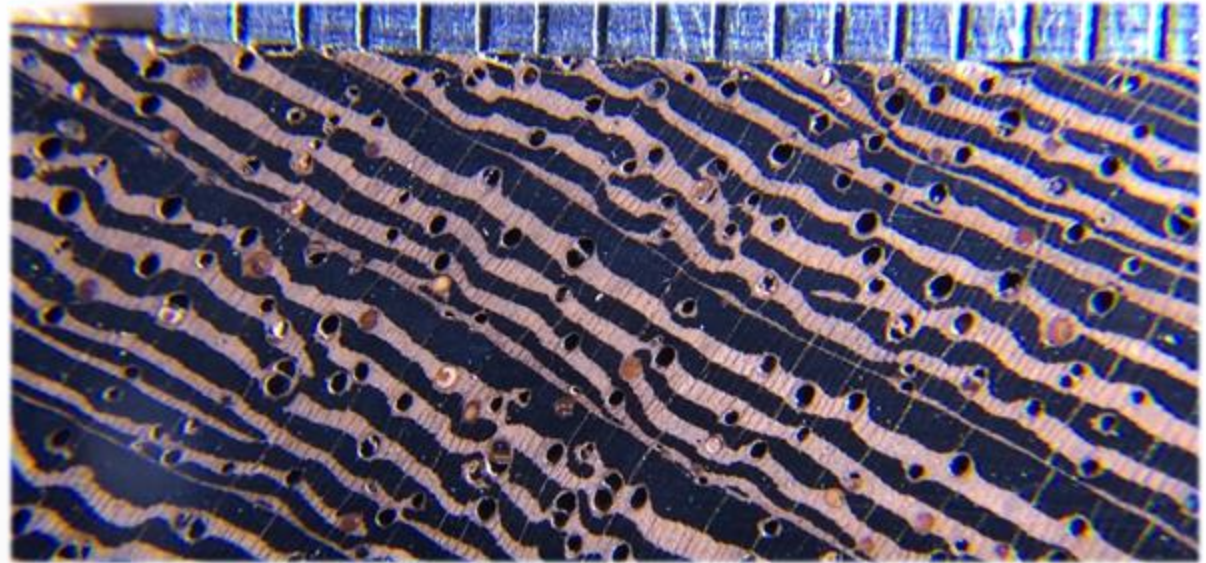
Photo : Ronan Béziers La Fosse

Au fil du temps déplacement des continents et changements climatiques





Kapur « *Dryobalanops sp* » DIPTEROCARPACEES
Photo Ronan Bézier La Fosse

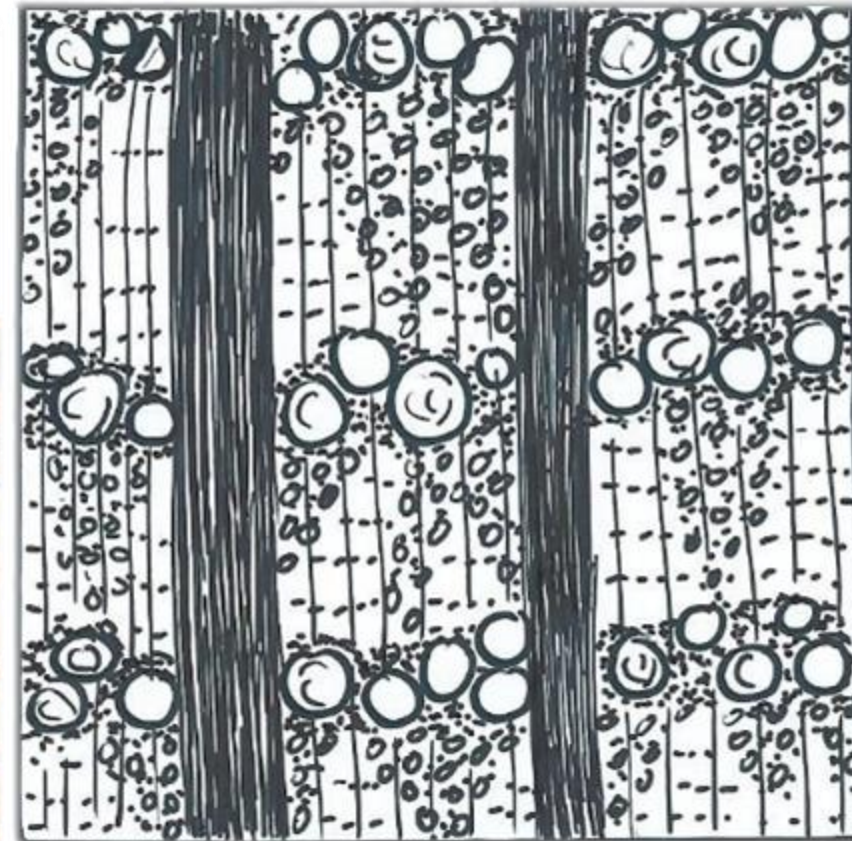


Wengé « *Milletia laurentii* » FABACEES ,
photo Ronan Béziers La Fosse

La signature de l'arbre à travers de son bois : la trame

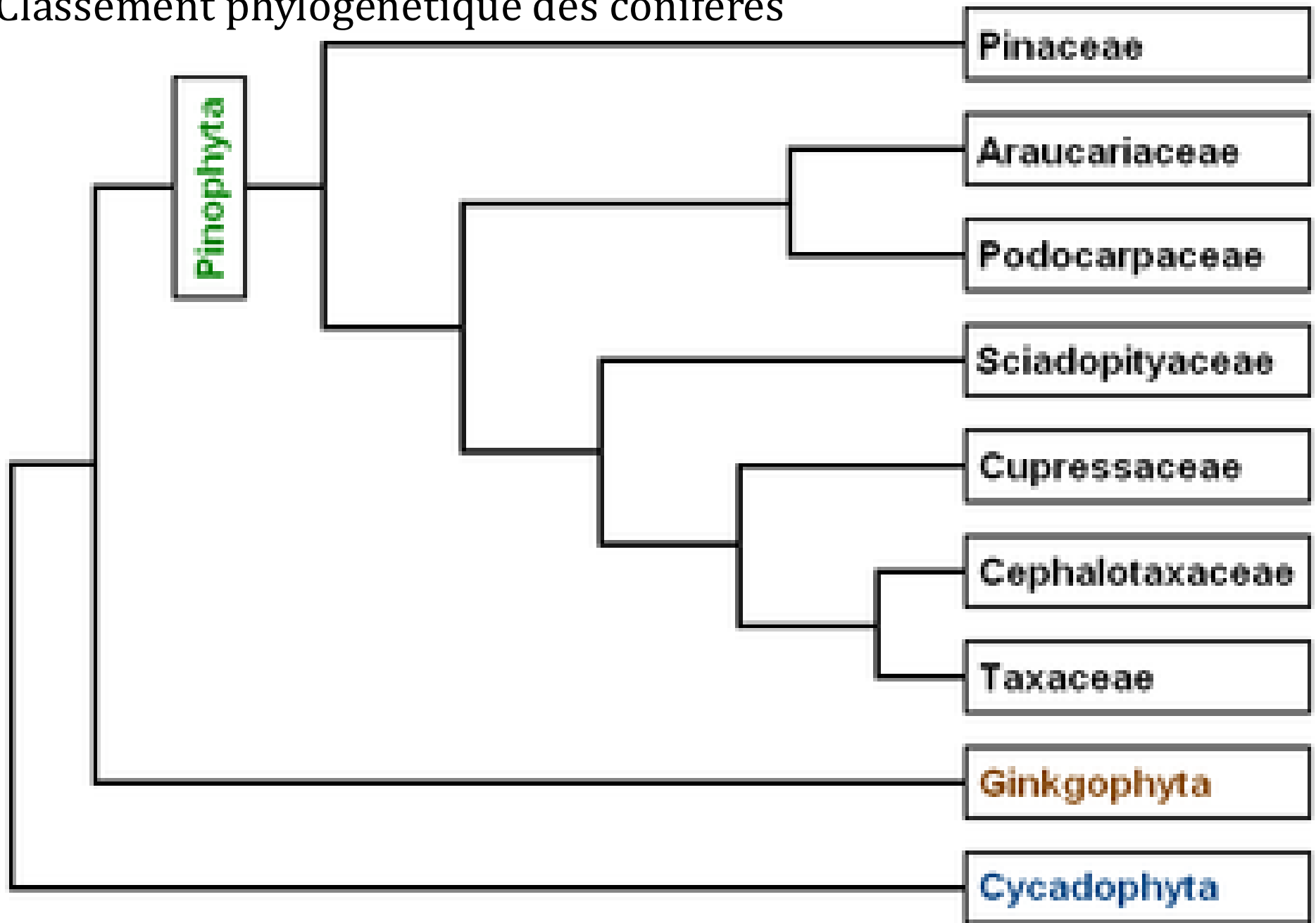


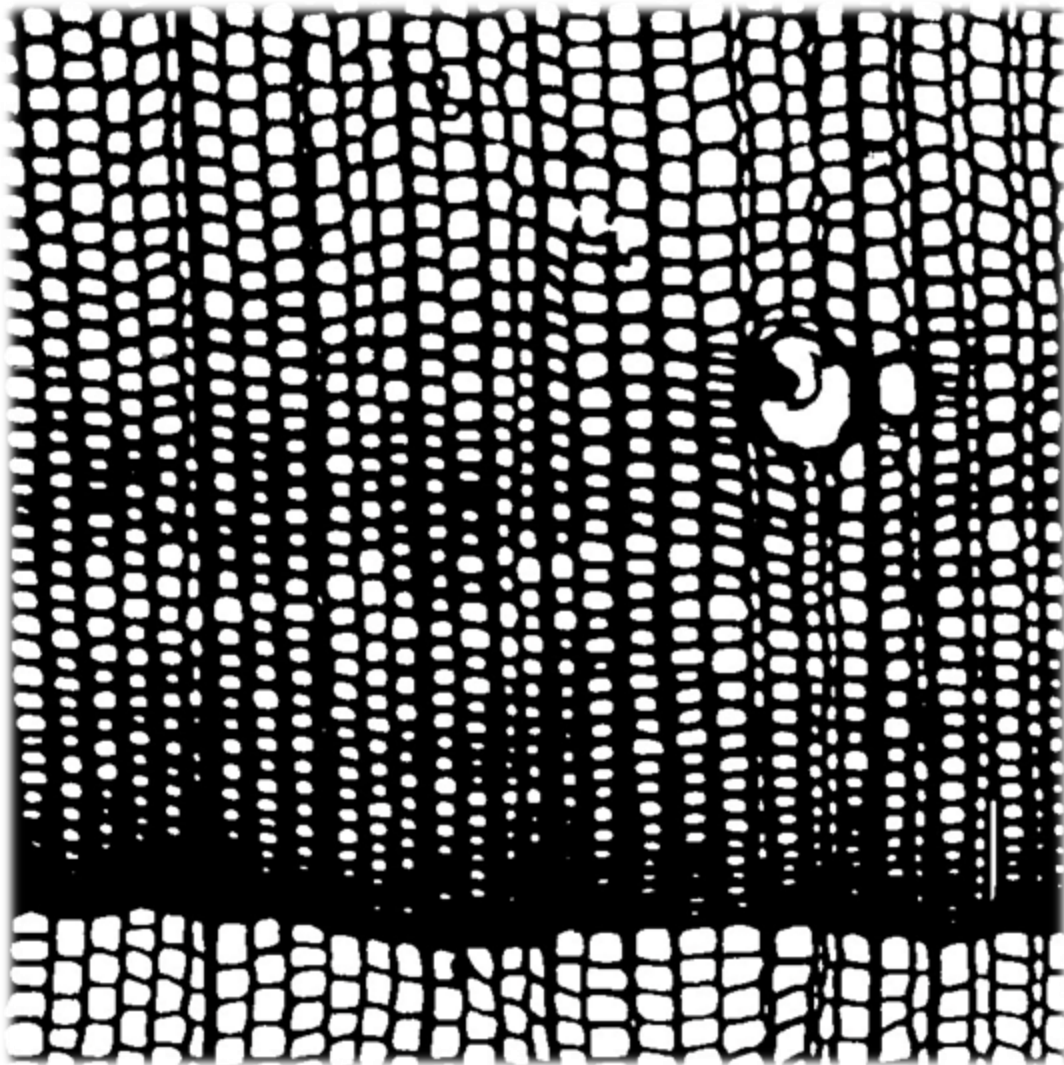
Chêne « *Quercus sp.* » Photo x 4



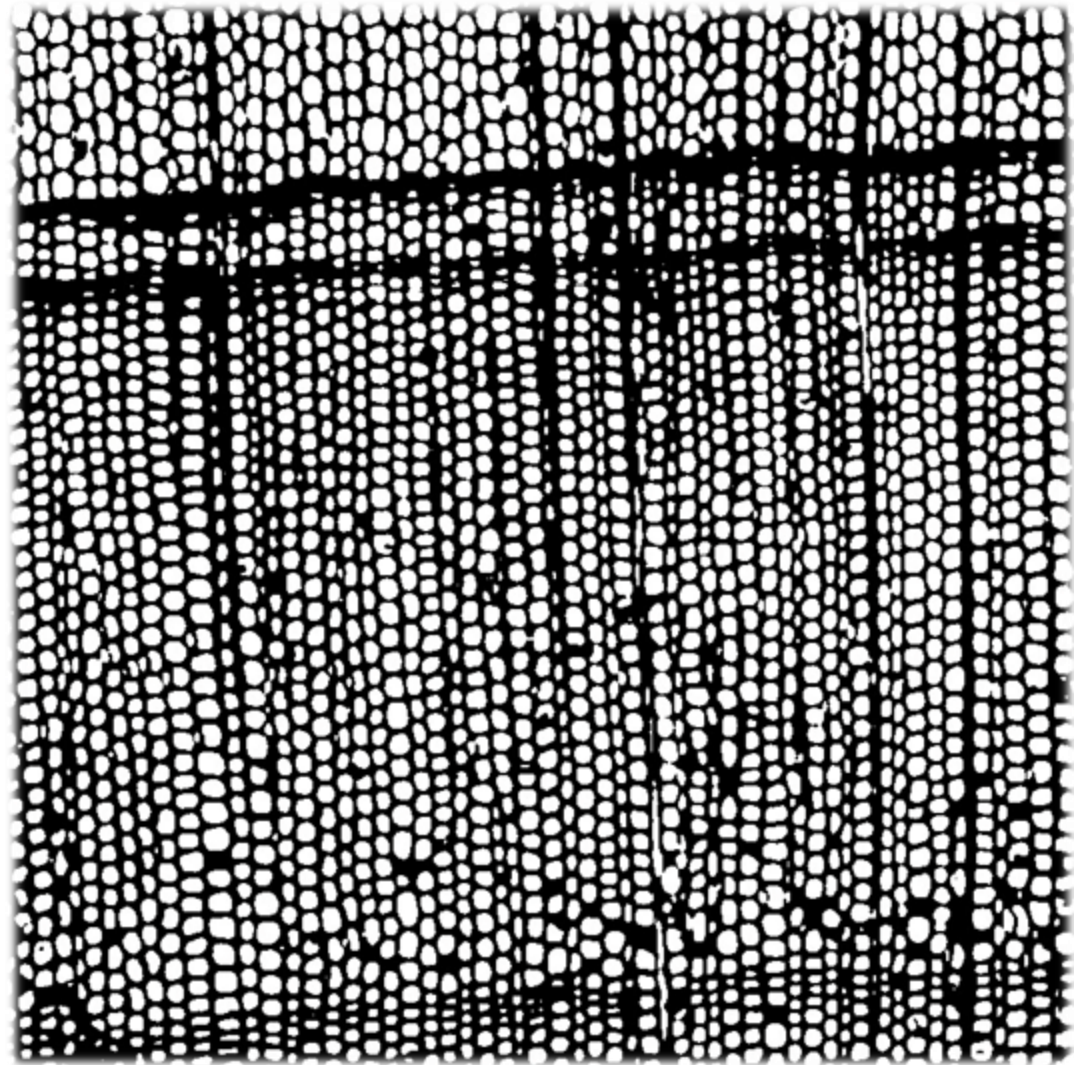
Signature : schéma x 10 x 2

Classement phylogénétique des conifères



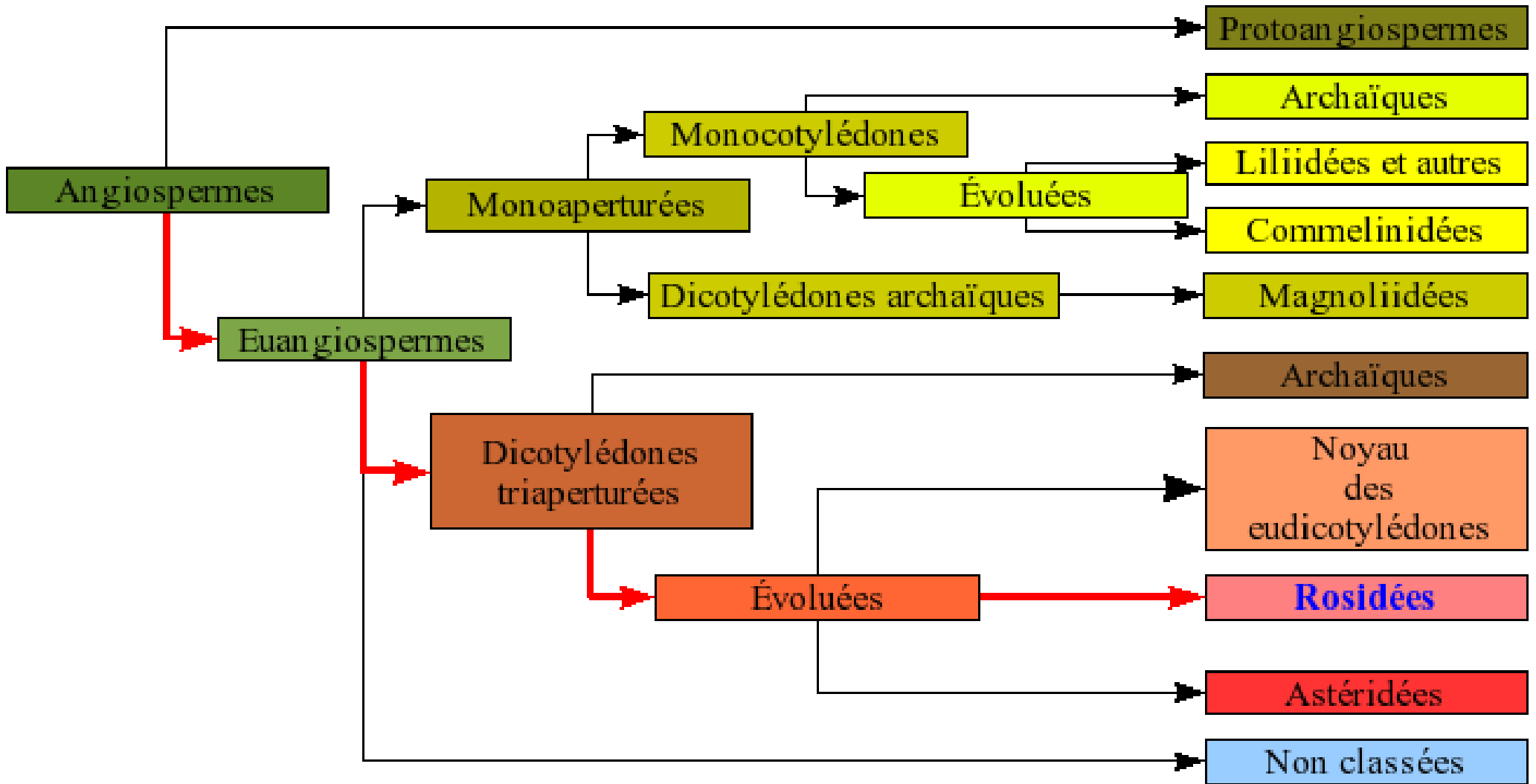


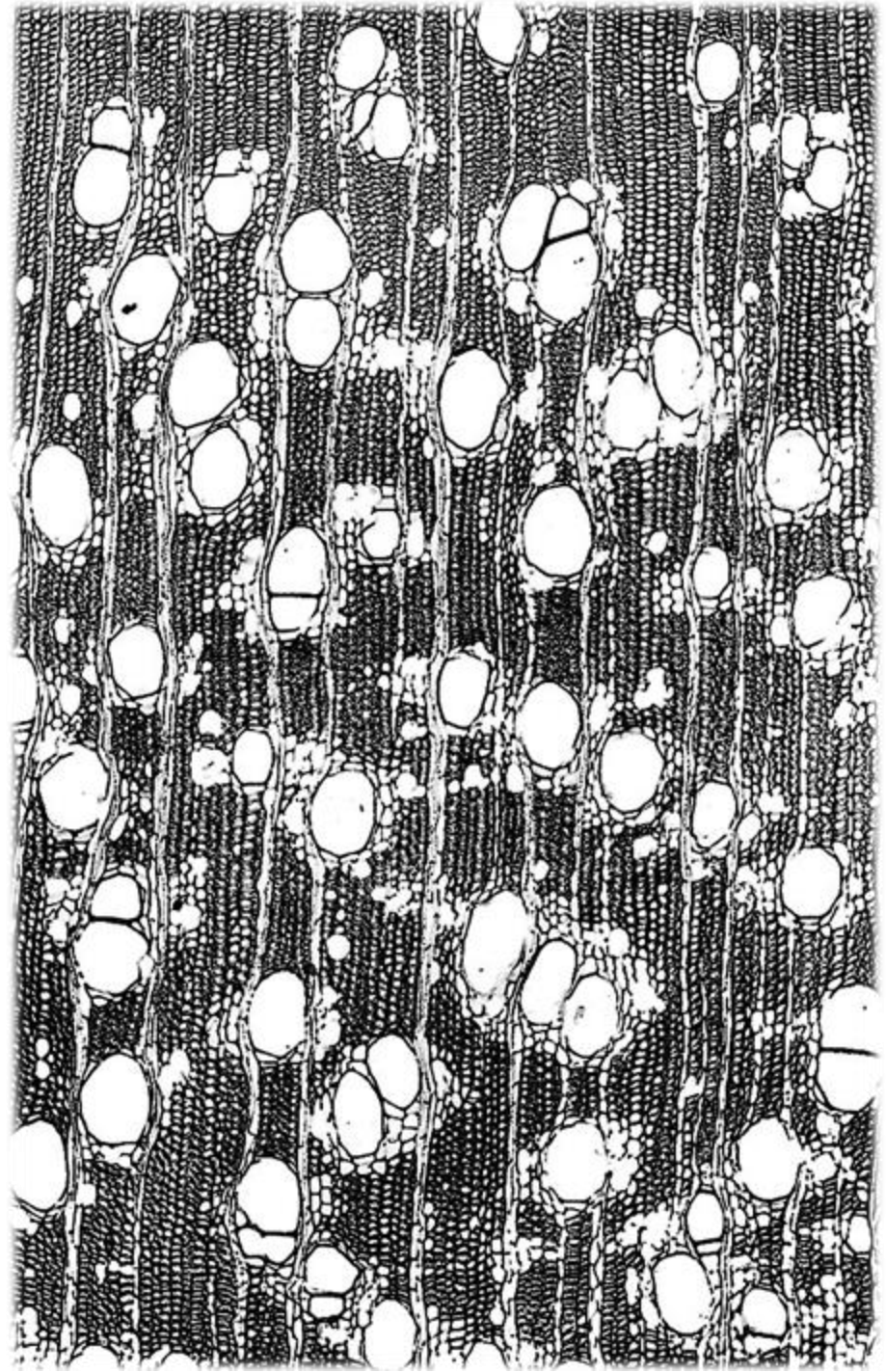
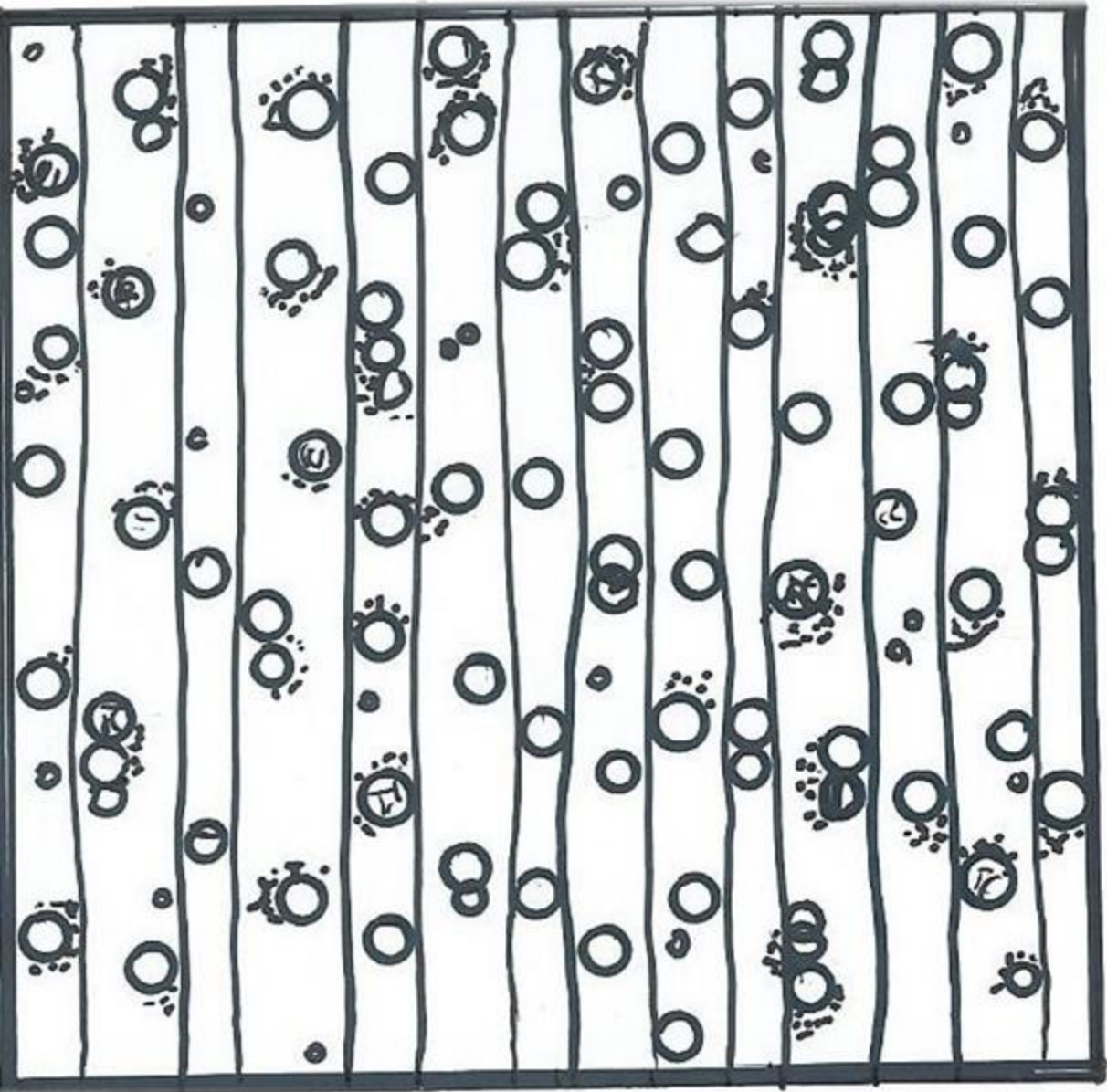
Pinacées : Pinus



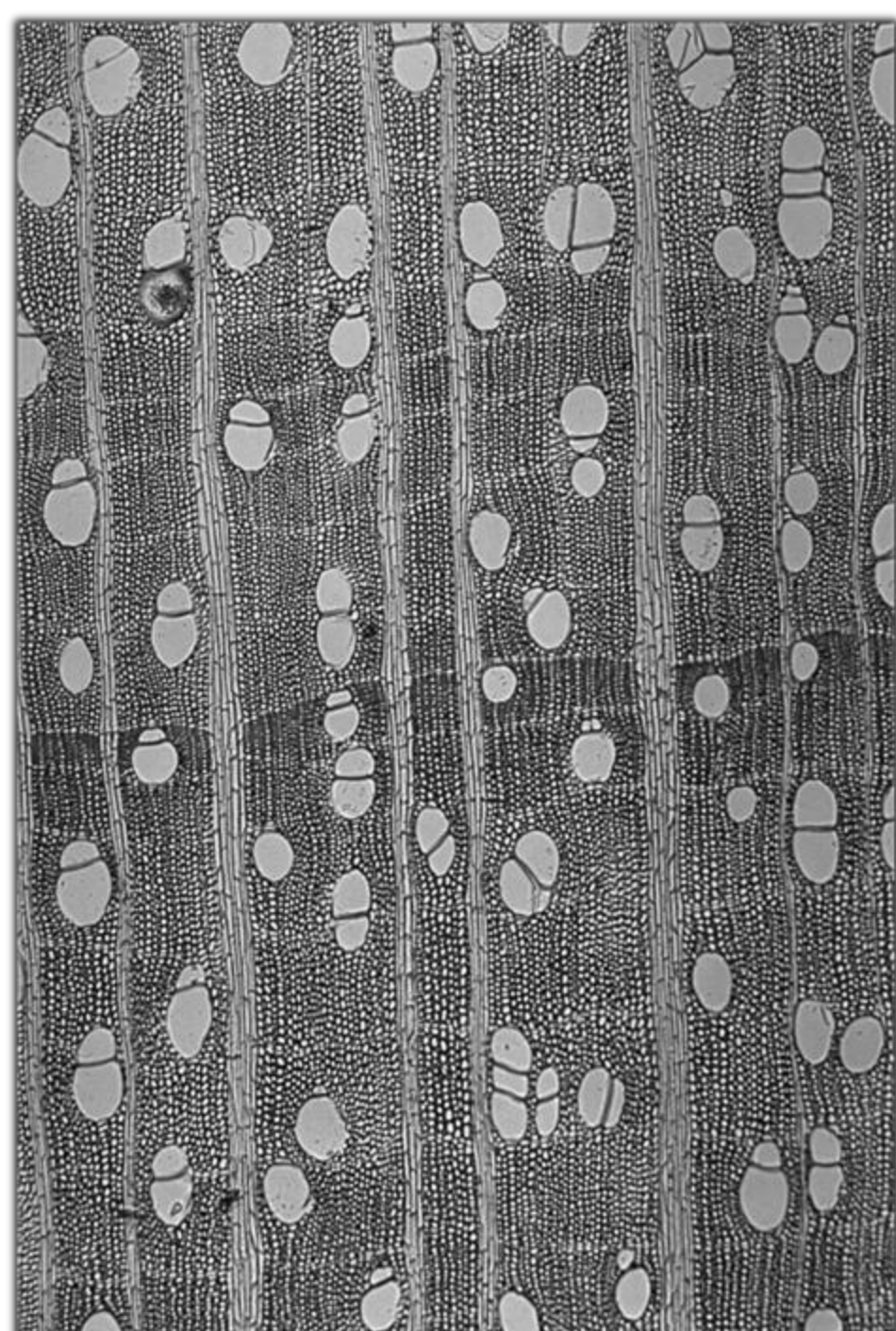
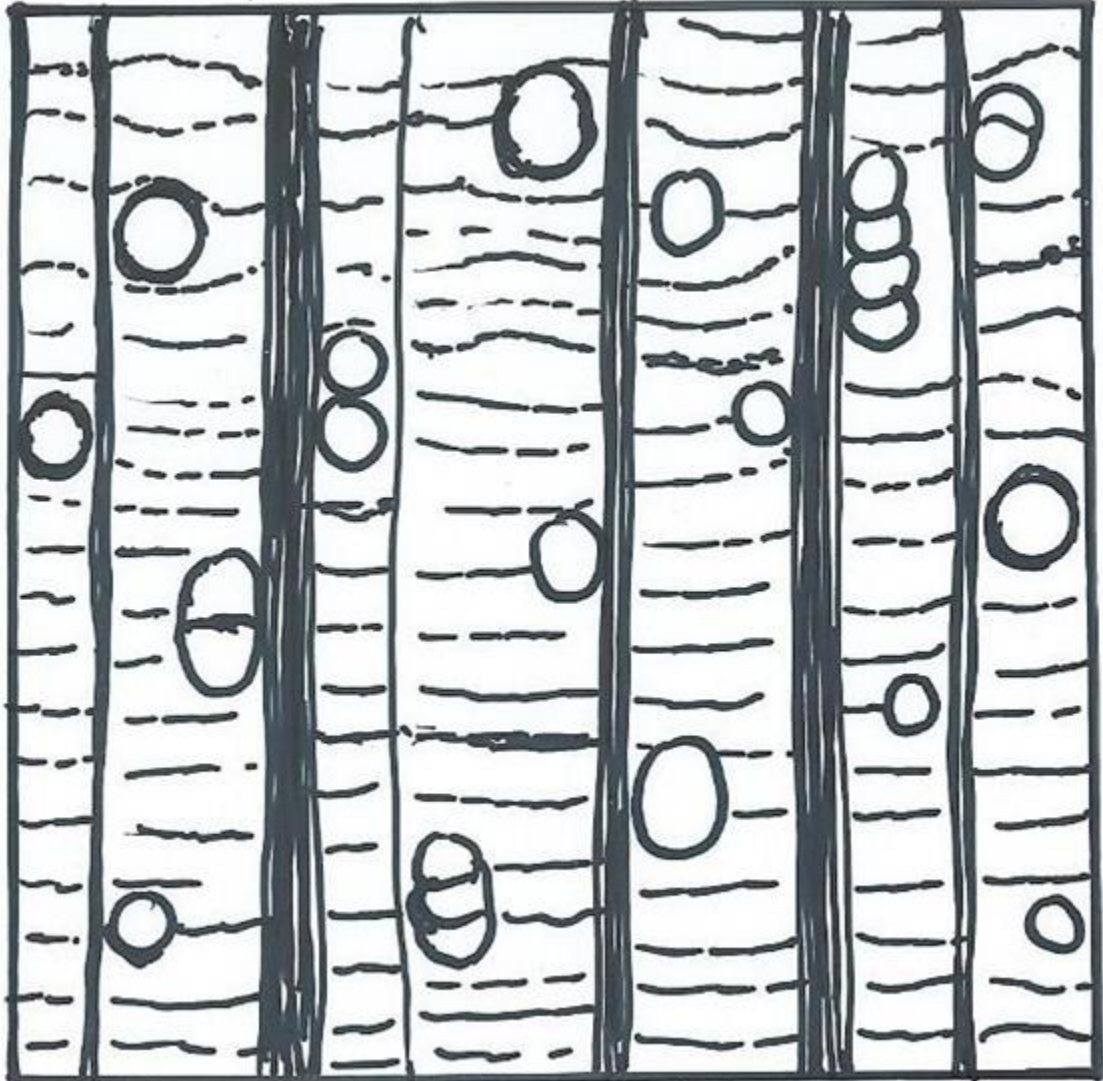
Cupressacées : Cyprès

Classement phylogénétique des feuillus

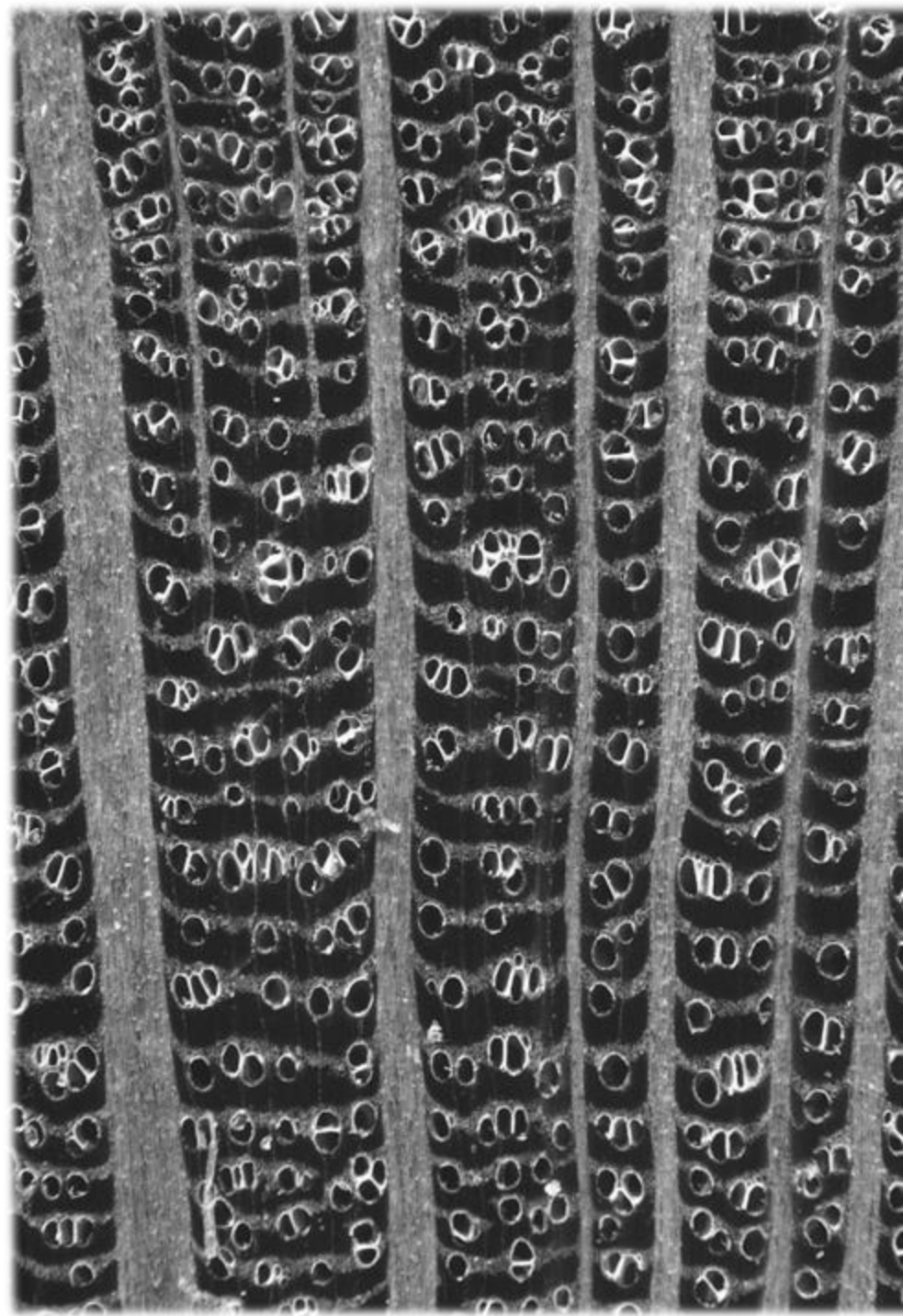
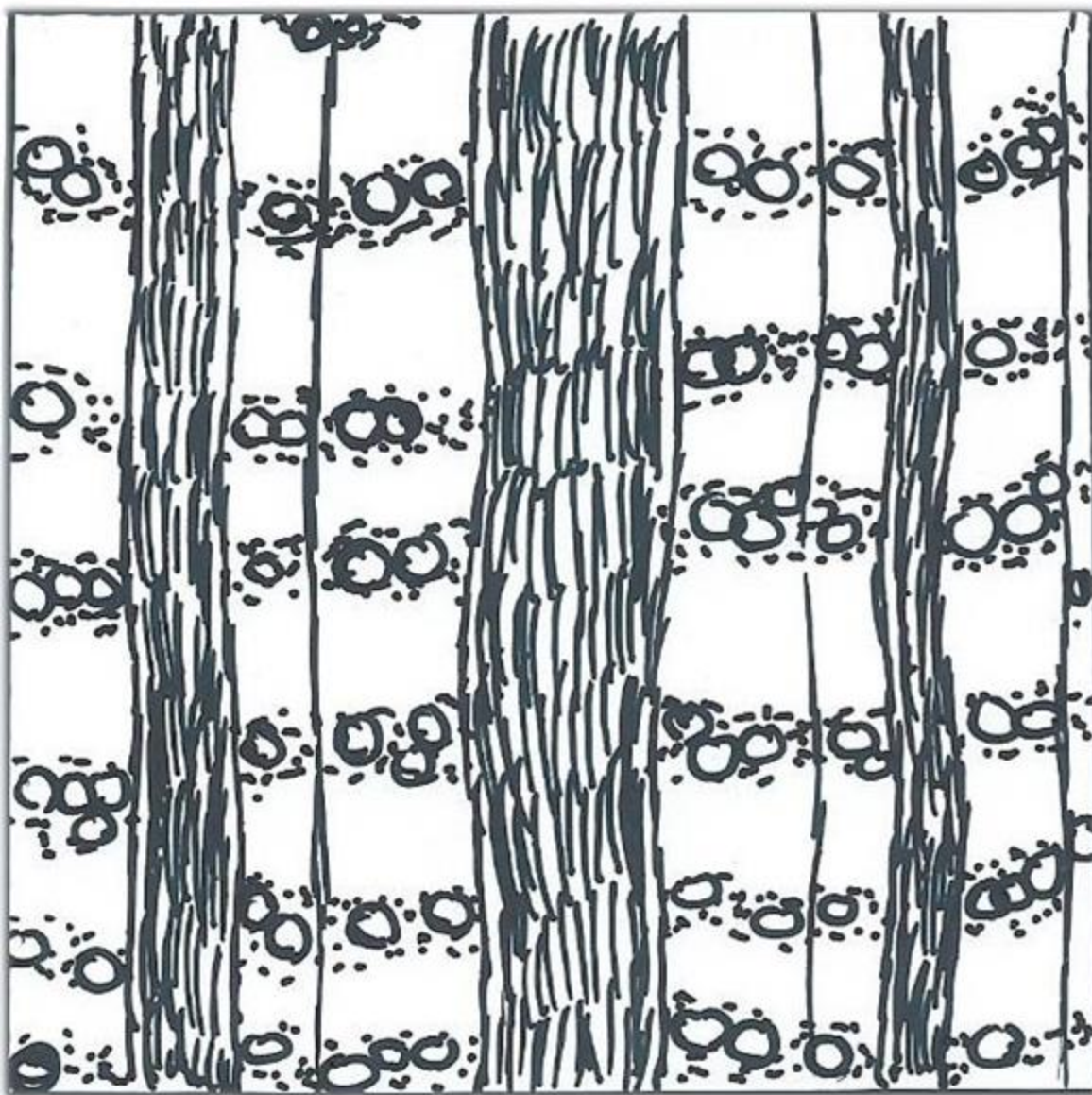




**Lauracées / *Ocotea rubra* Photo
: Pierre Détienne**

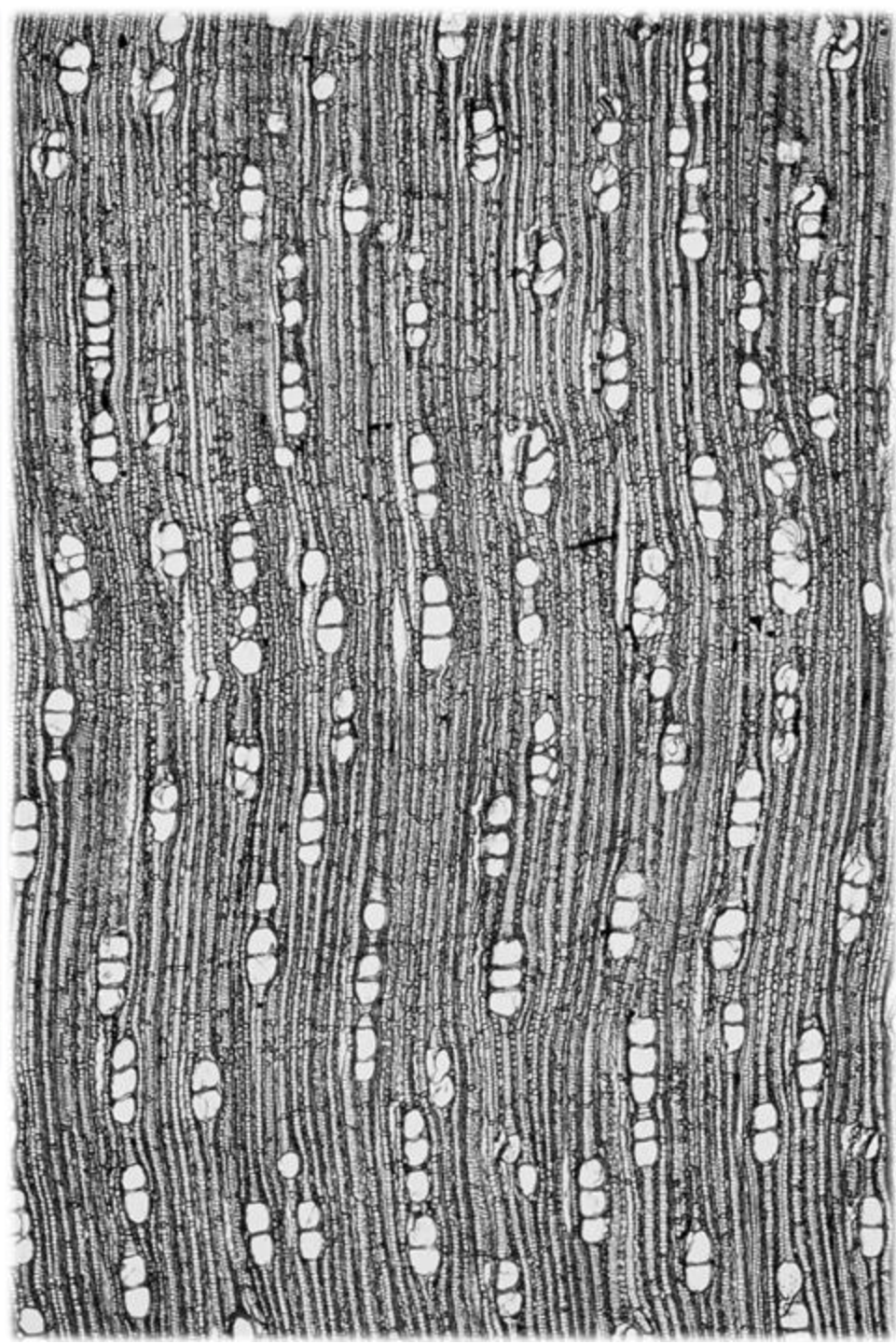
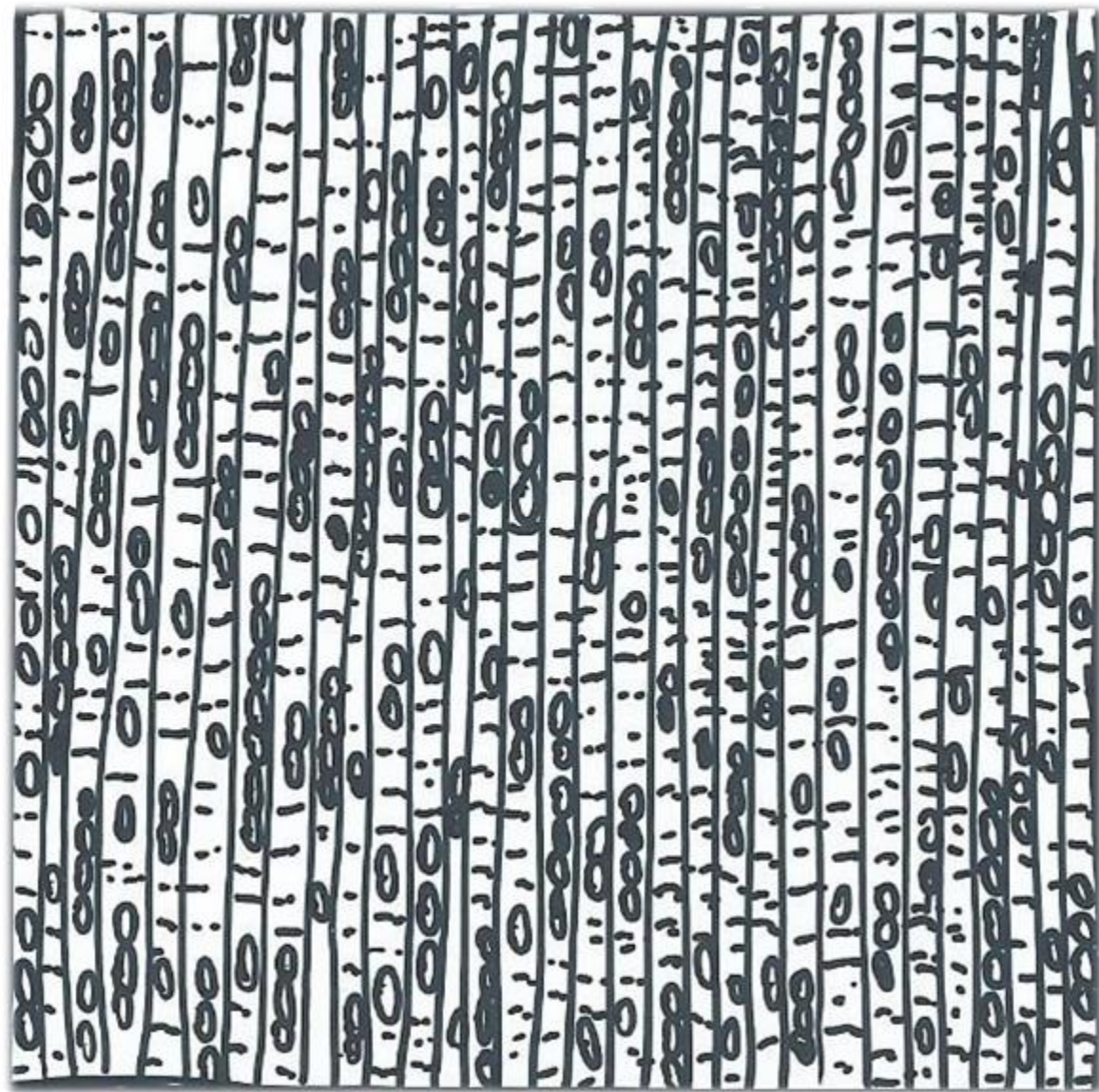


**Annonacées / *Enantia chlorantha* /
Photo : Hans Beeckman**

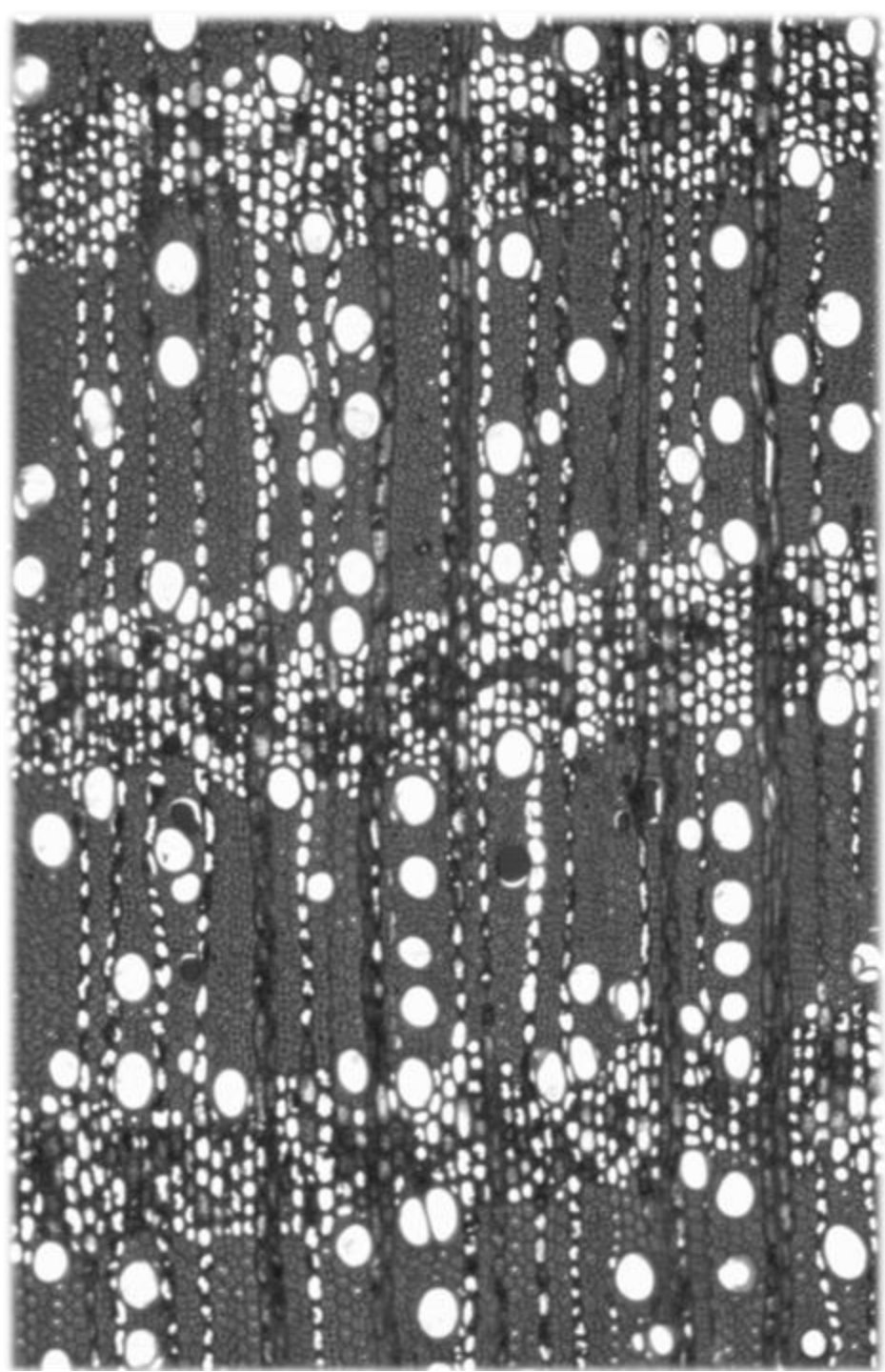
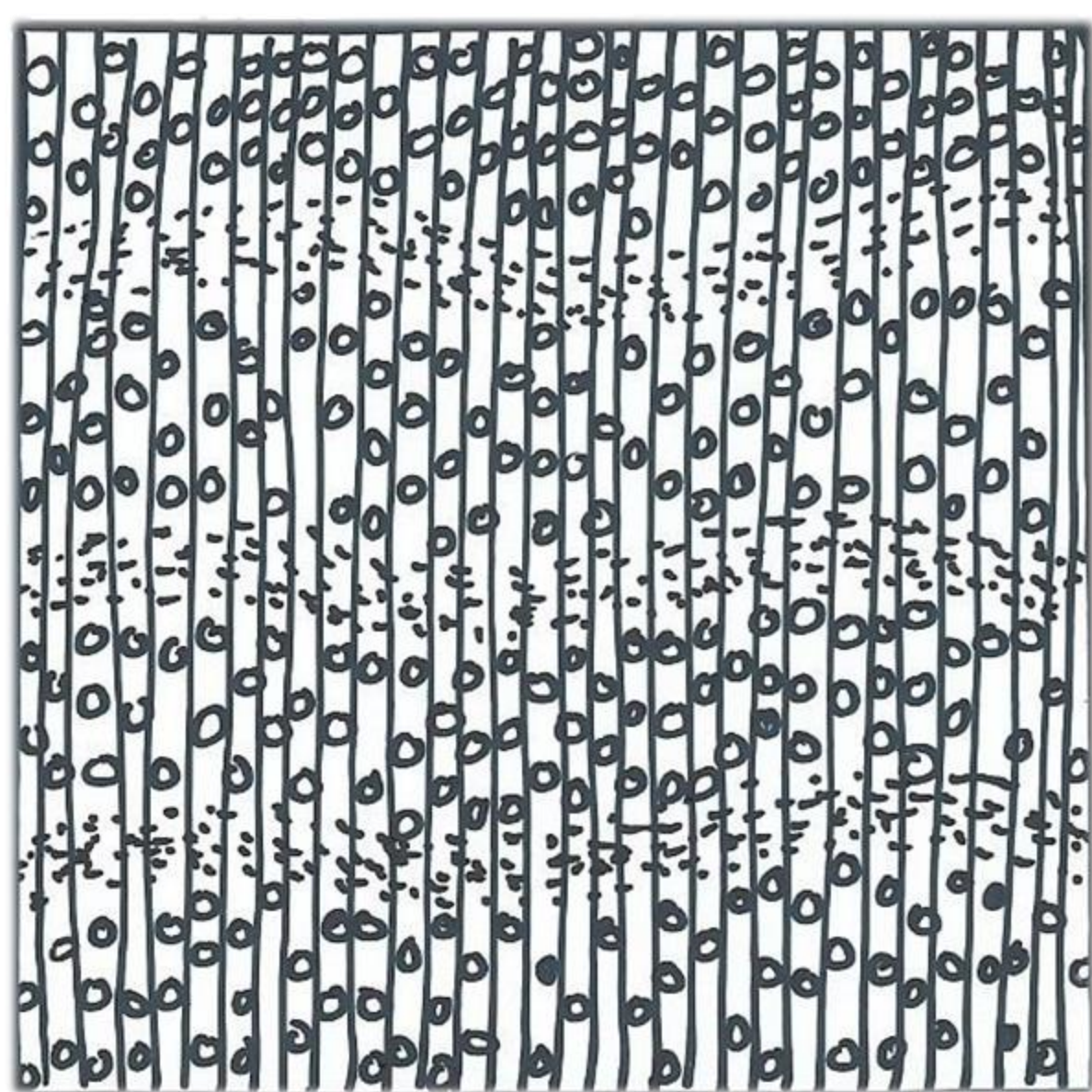


Protéacées / *Roupala montana*

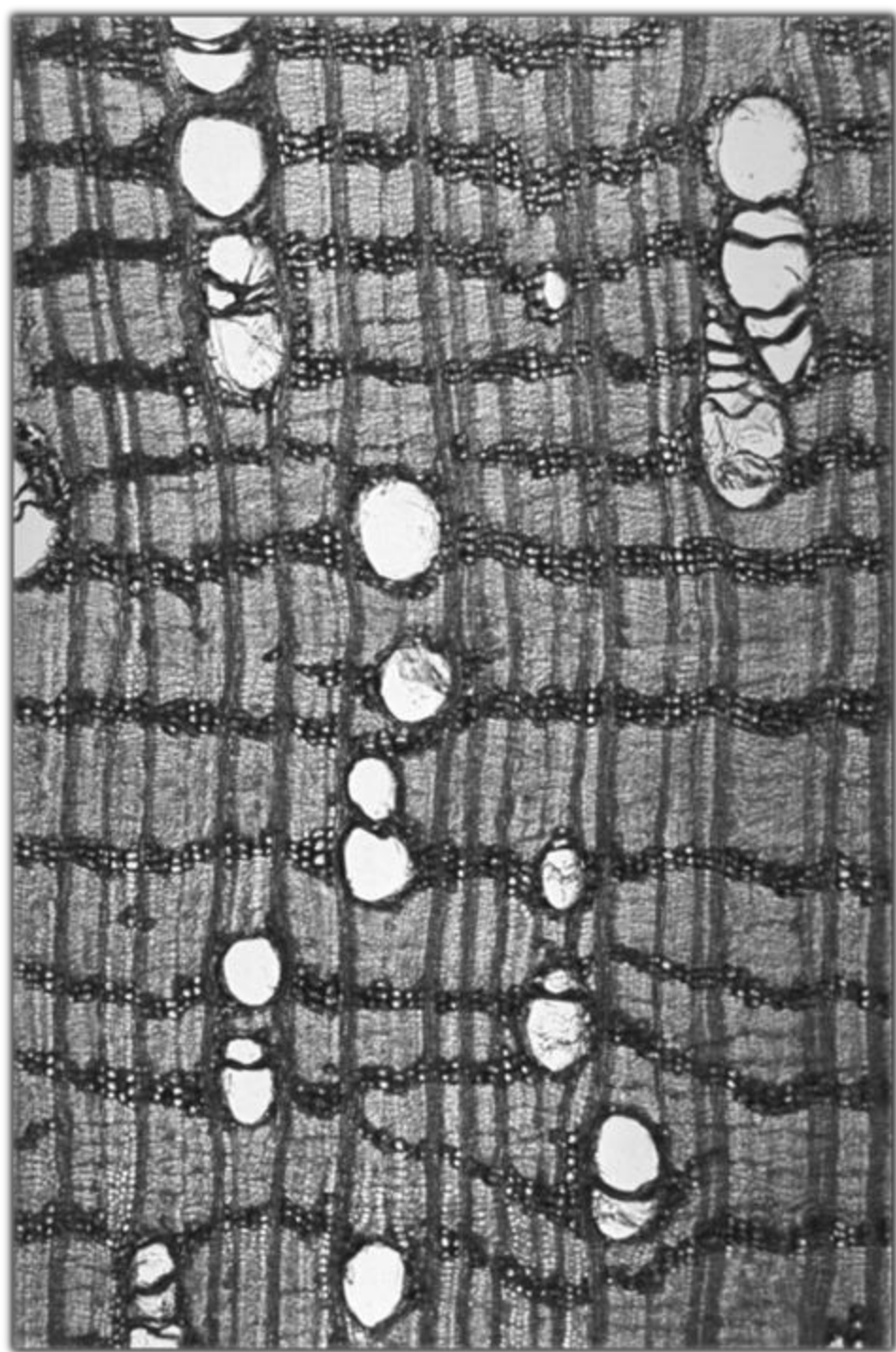
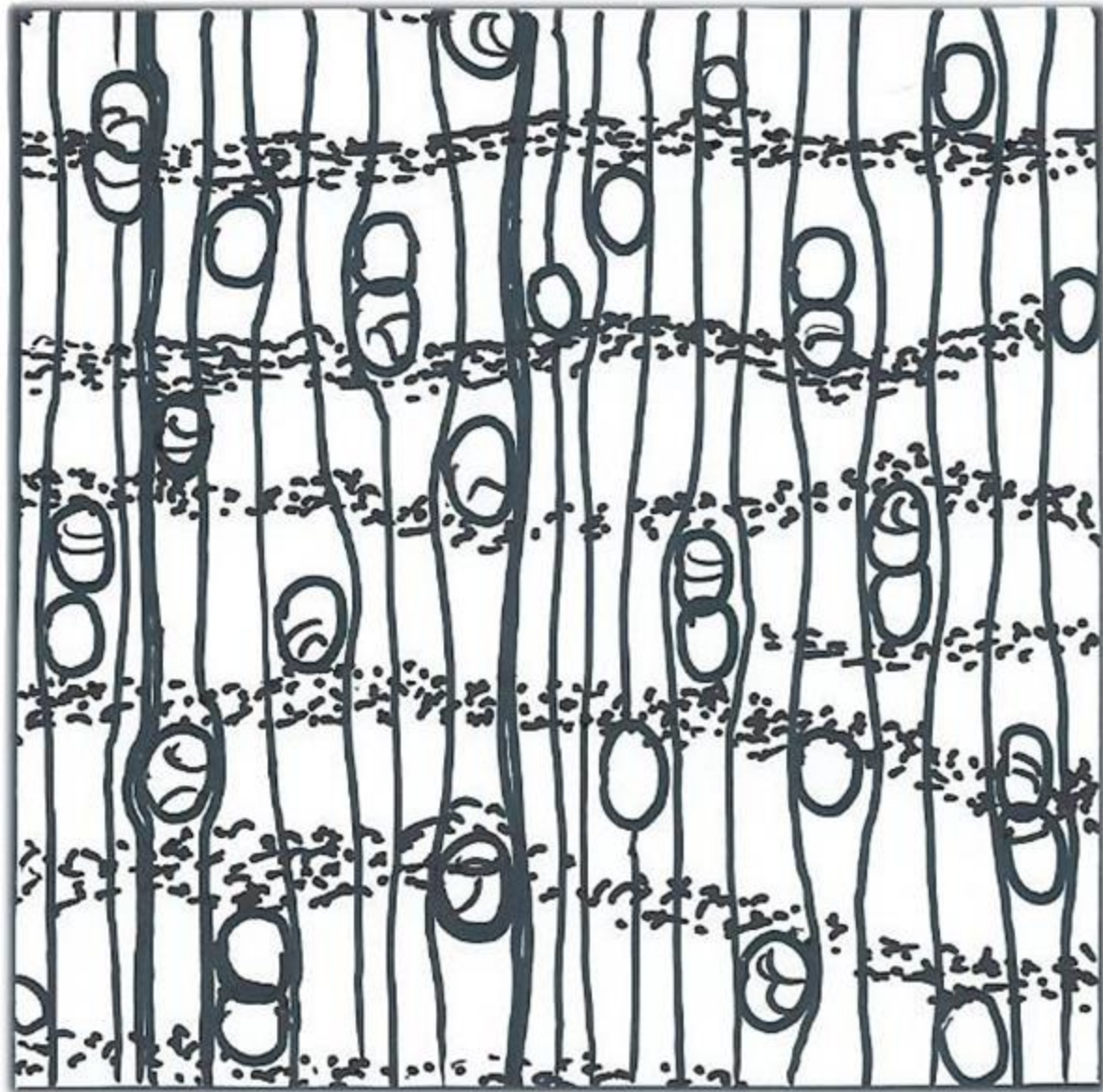
Photo : L.Y.T. Westra



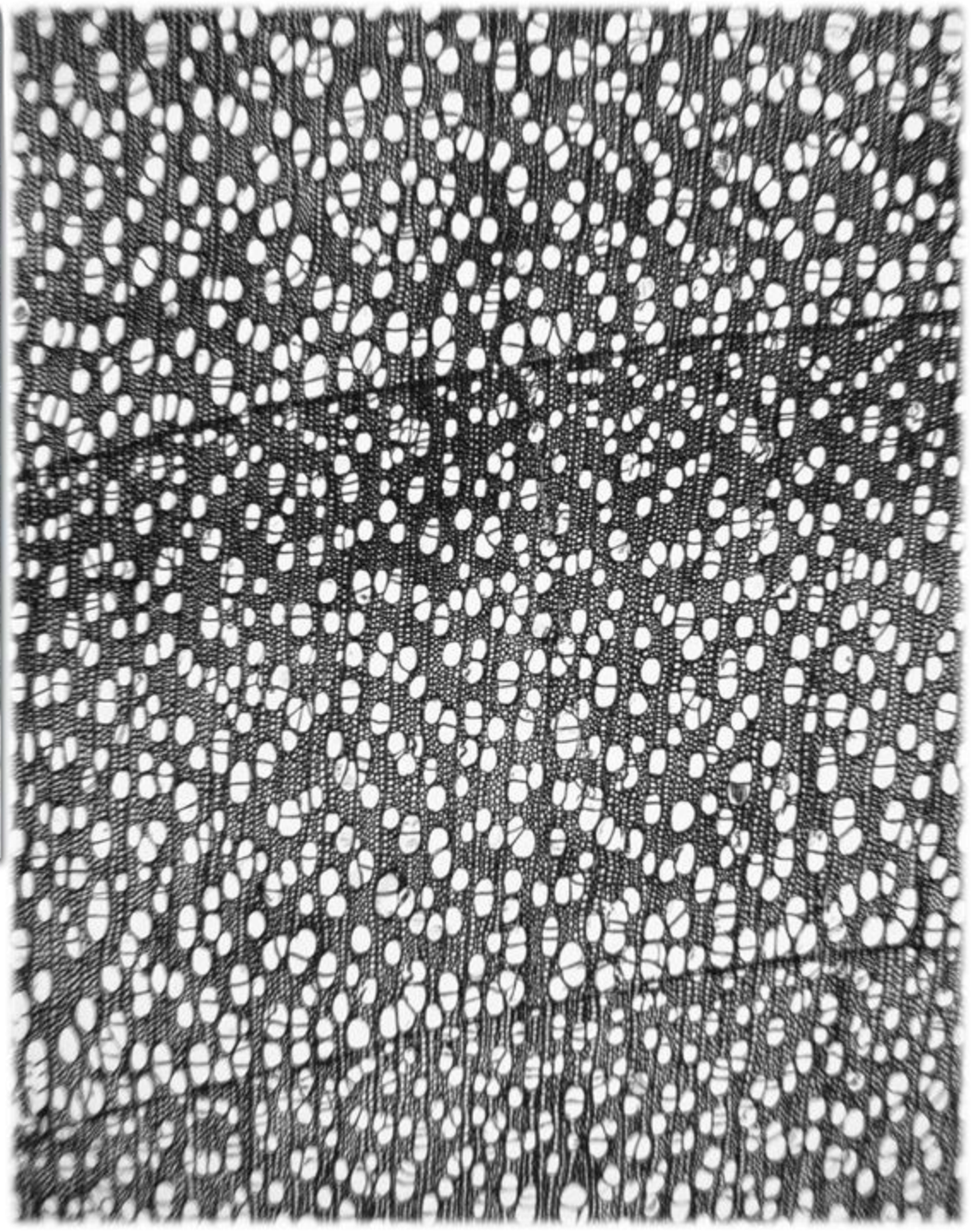
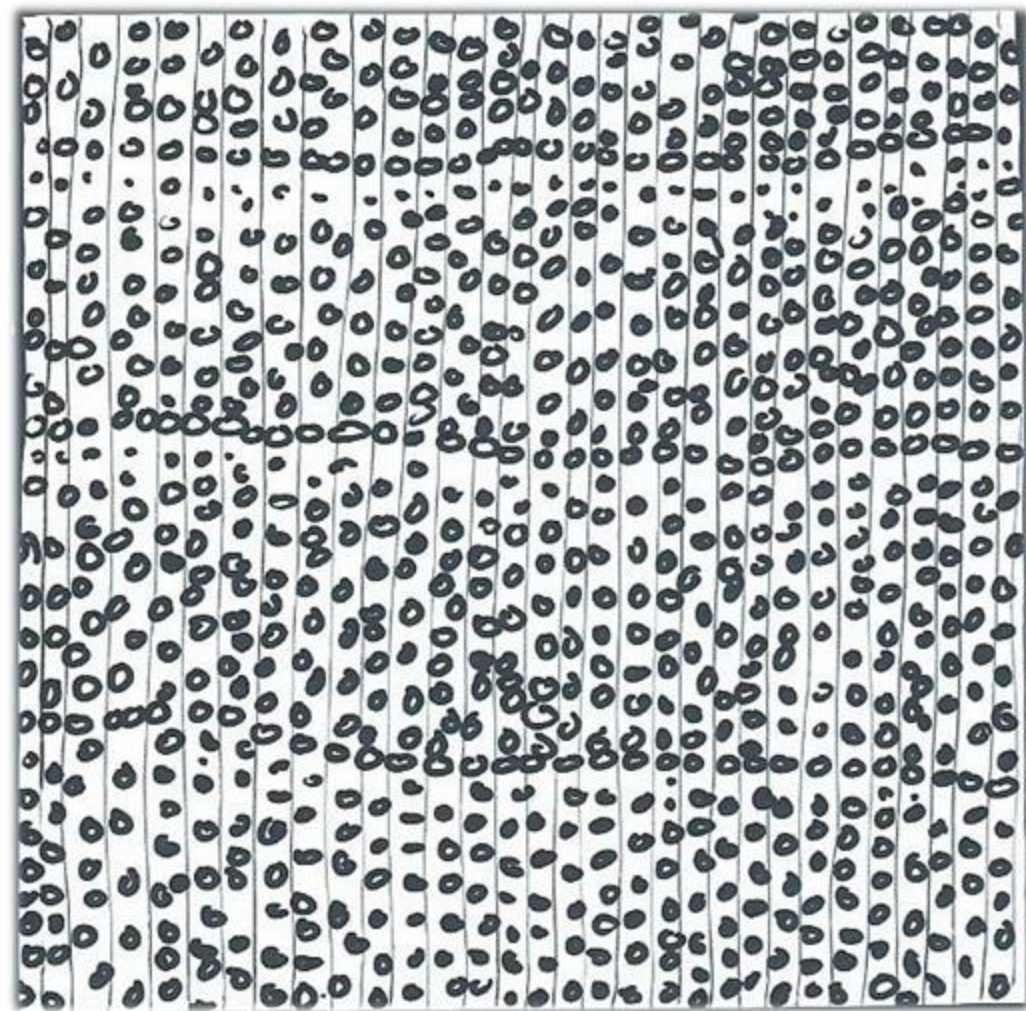
Olacacées / *Coula eludis*
Photo : Hans Beeckman



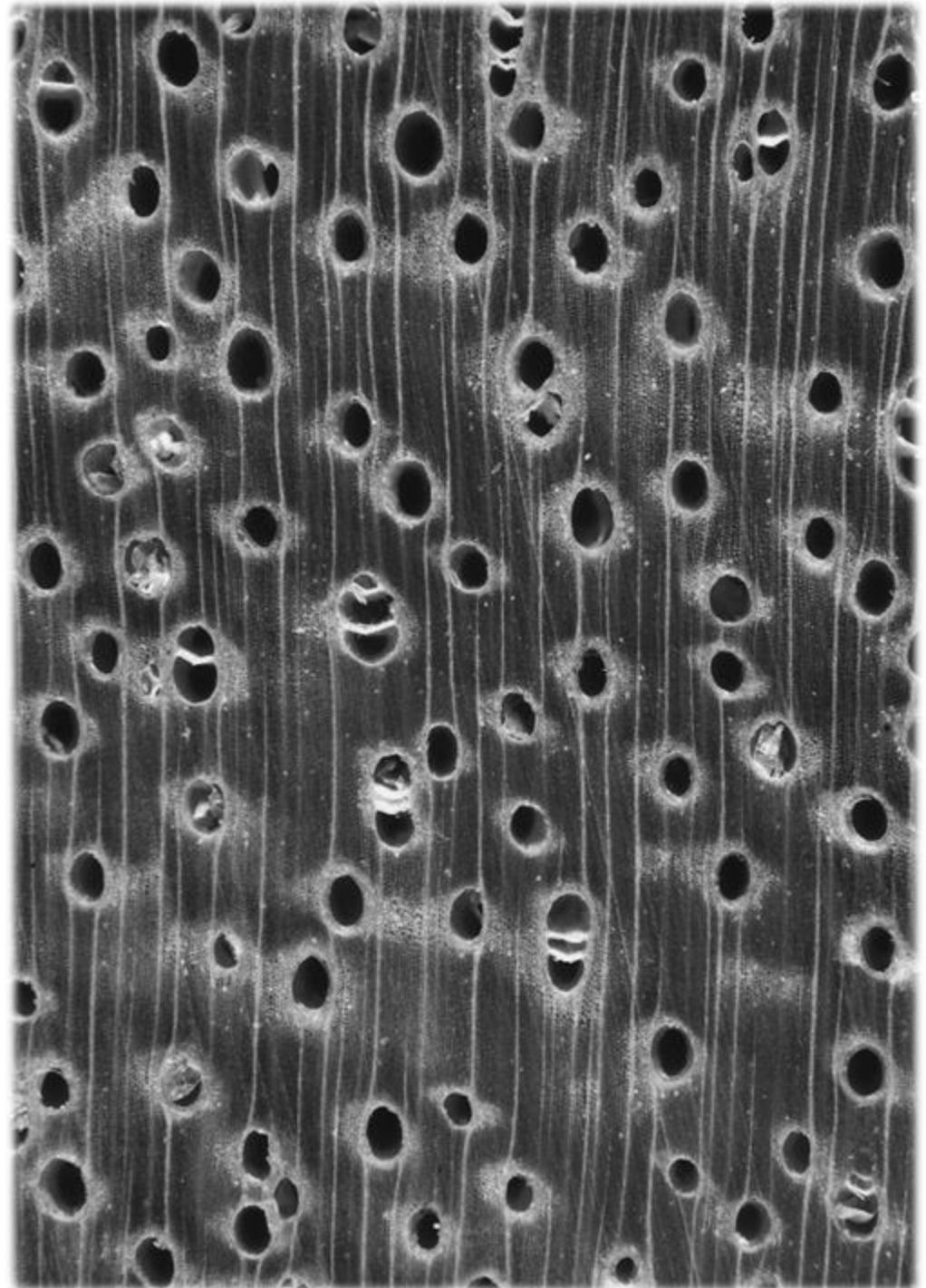
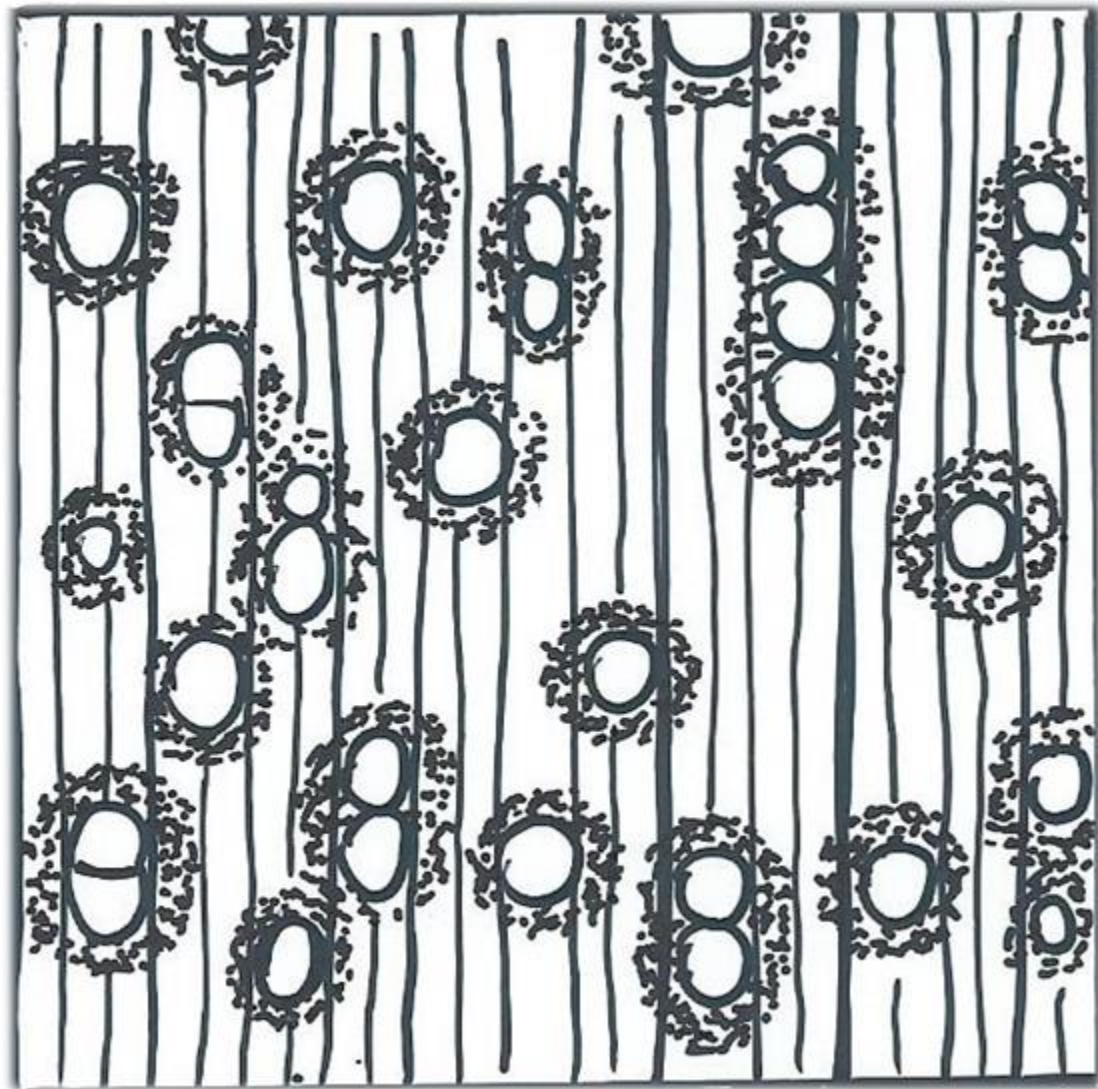
Celastracées / *Maytenus sp*
Photo :M.E. Bakker



**Irvingniacées / *Desbordesia*
glaucescens / Alep
Photo : Hans Beeckman**



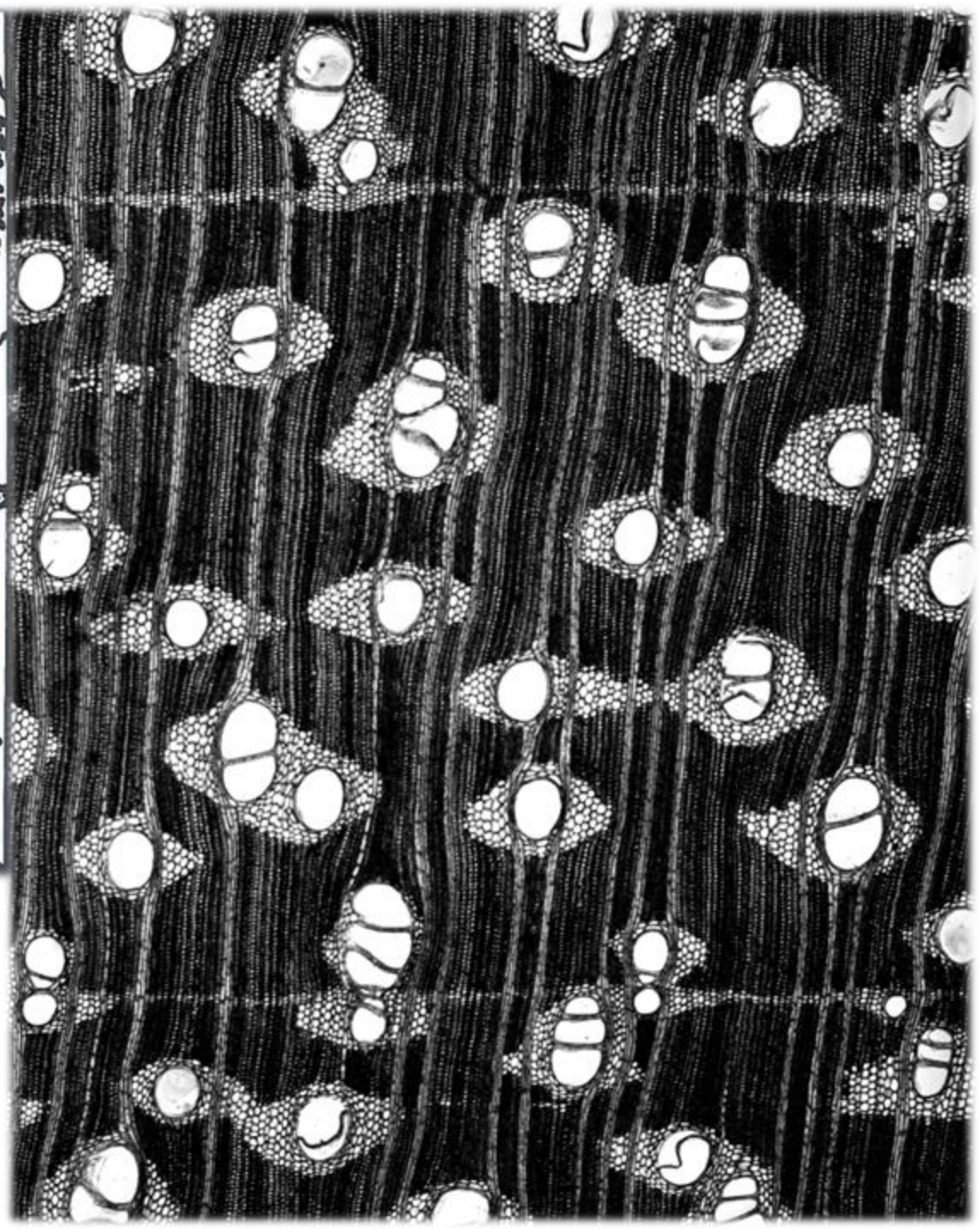
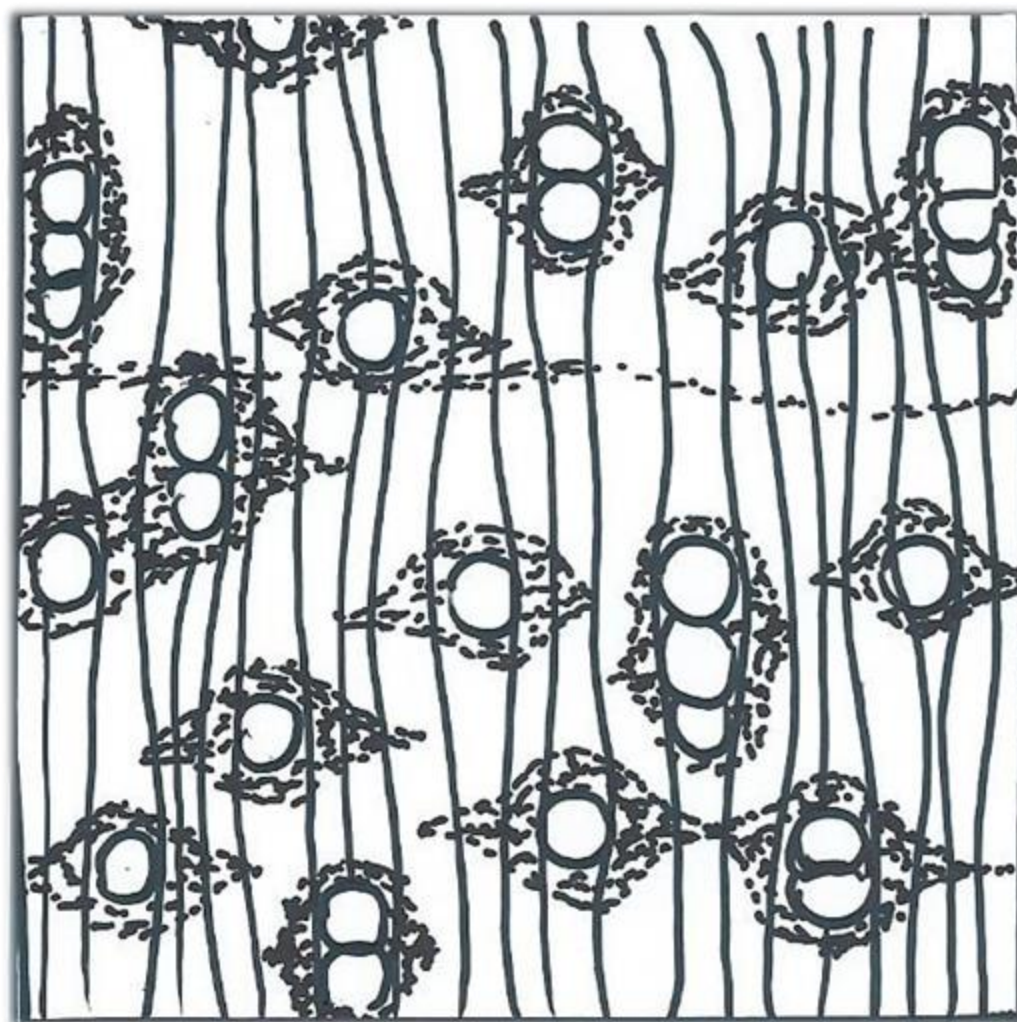
Salicacées / *Populus* sp
Photo *Elisabeth Wheeler*



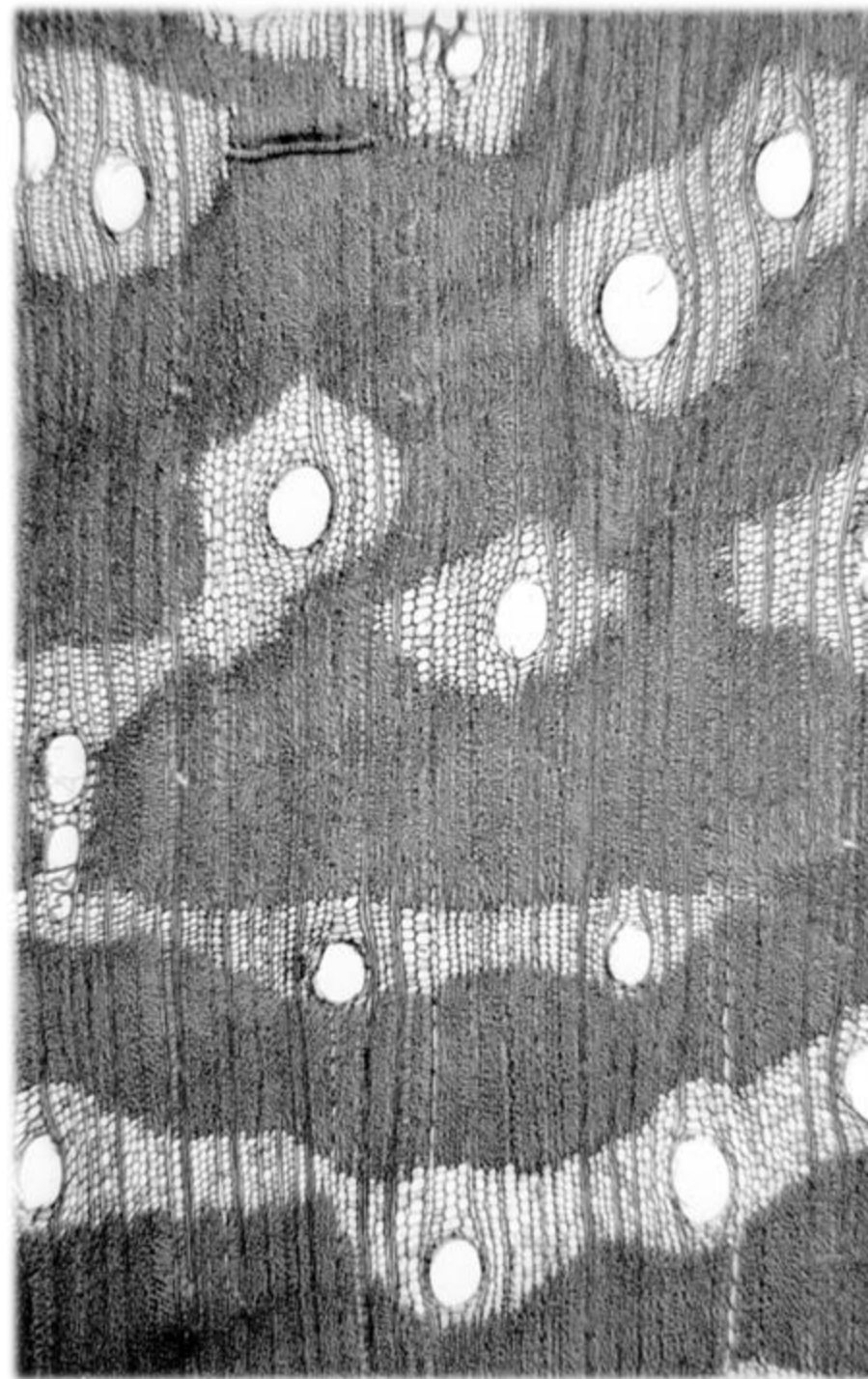
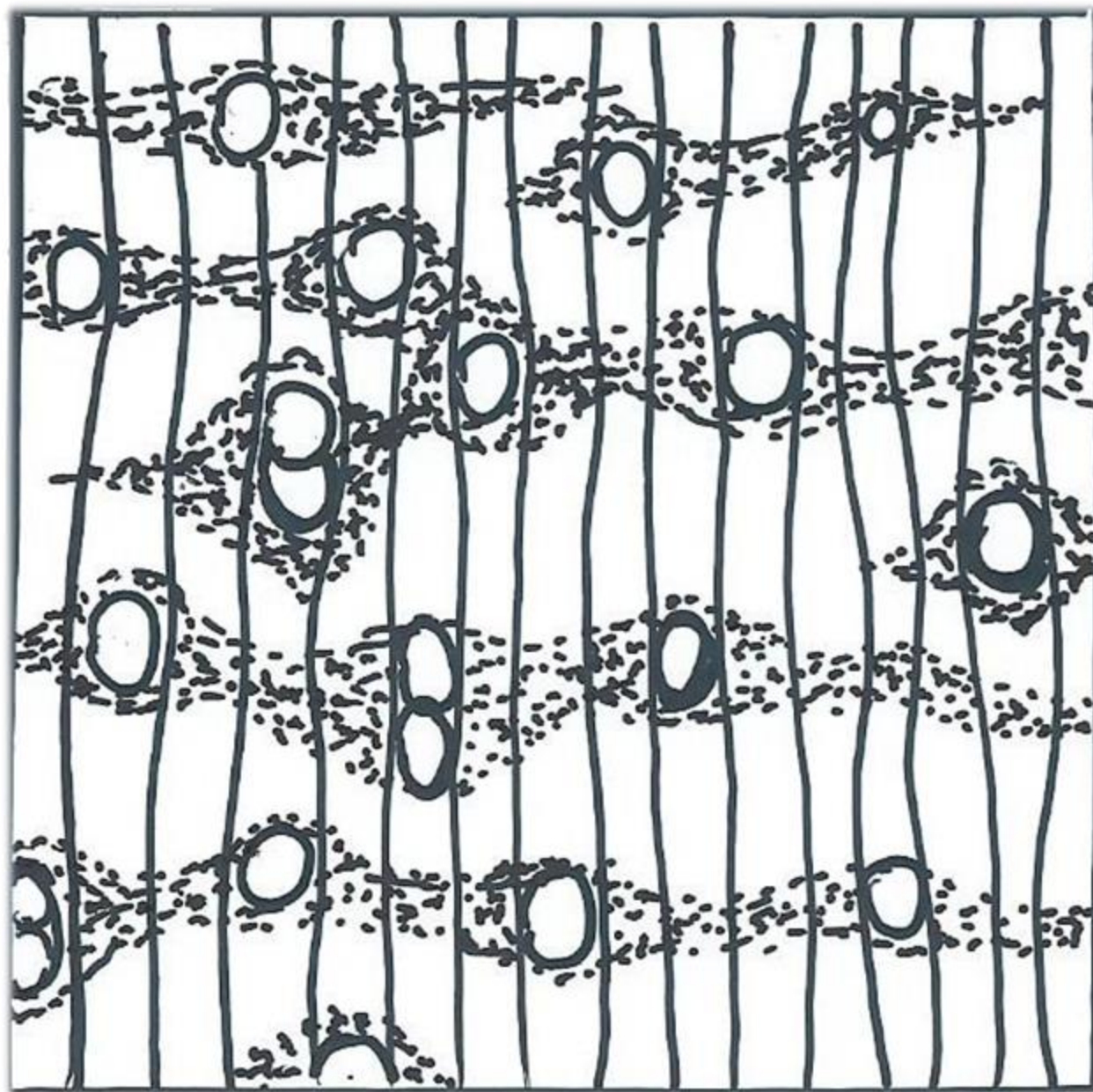
Fabacées / Mimosoïdées

***Inga edulis* / Oueko**

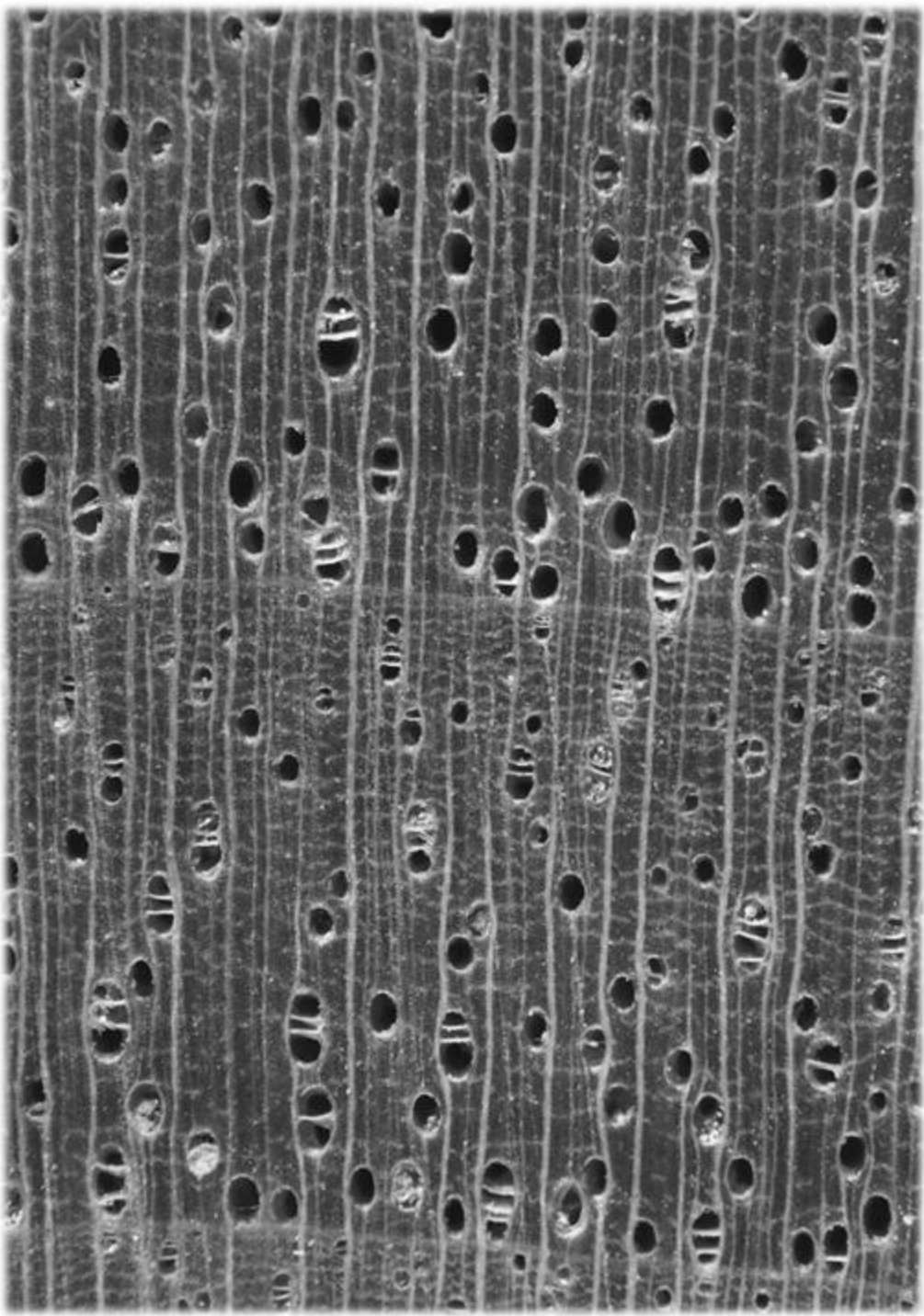
Photo : L.Y.T. Westra



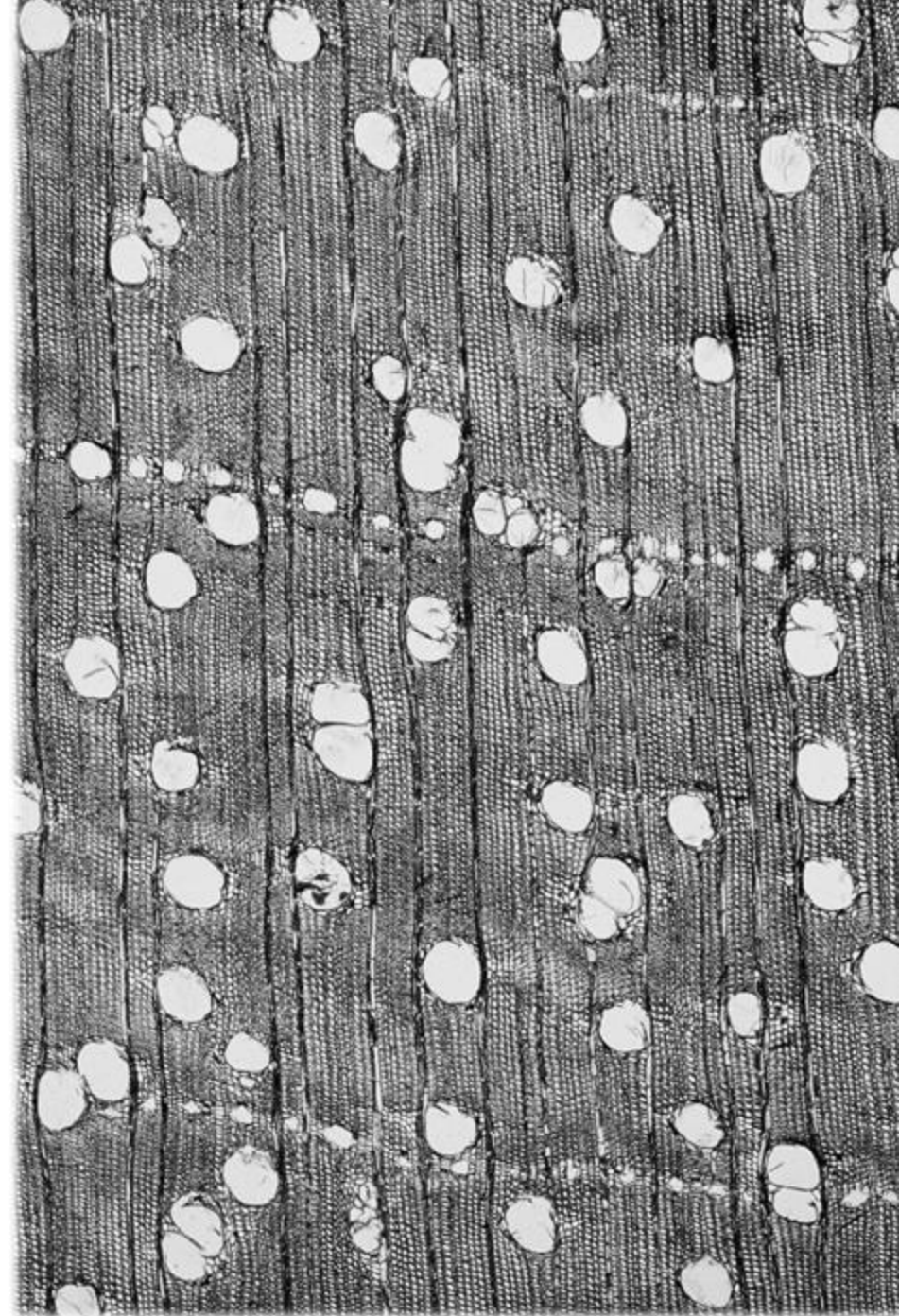
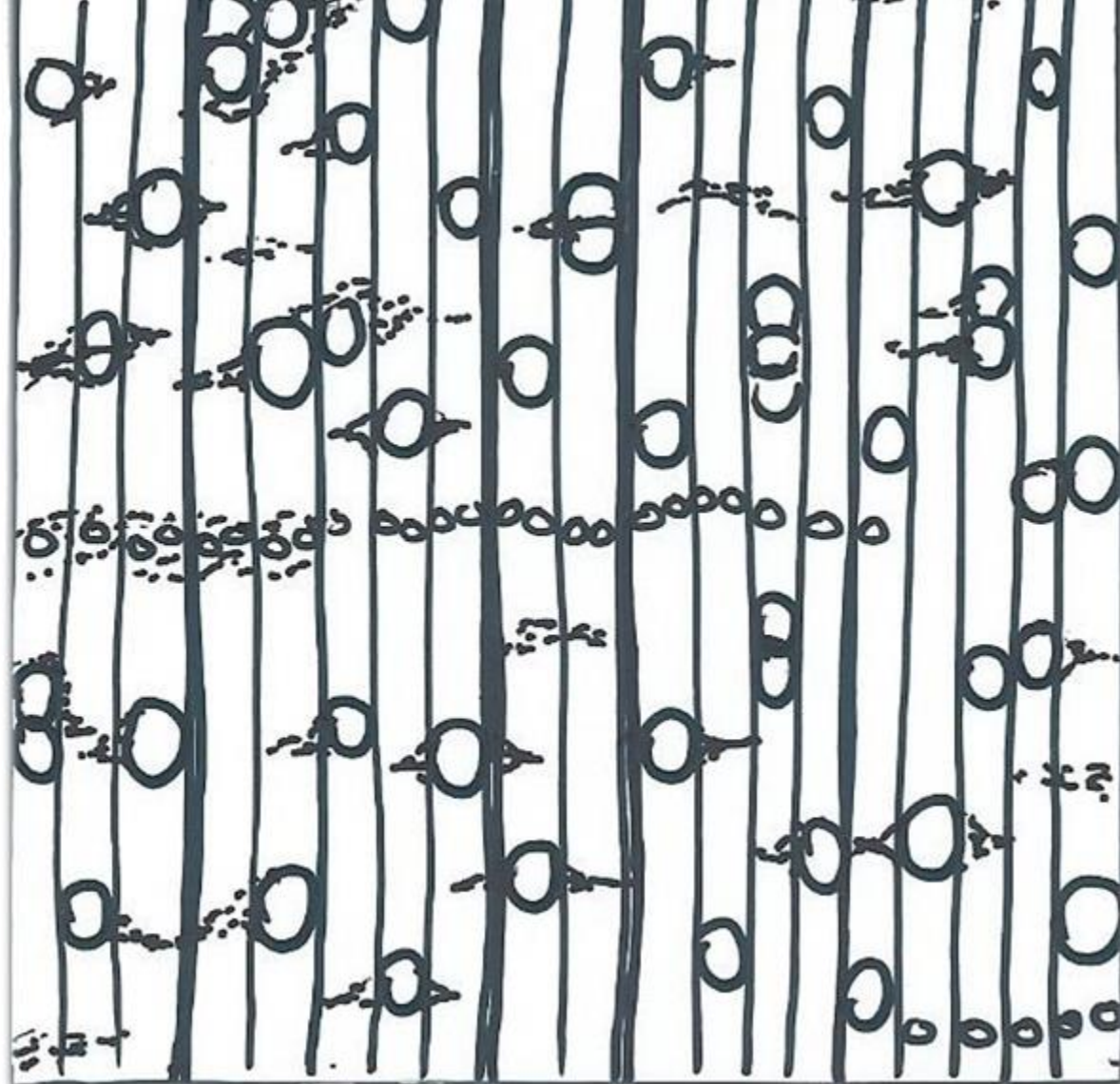
Fabacées Caesalpinioïdées
Afzelia pachyloba /
Doussié
Photo : Hans Beeckman



**Fabacées / Faboïdées / *Andira*
surinamensis Photo : Peter Casson**



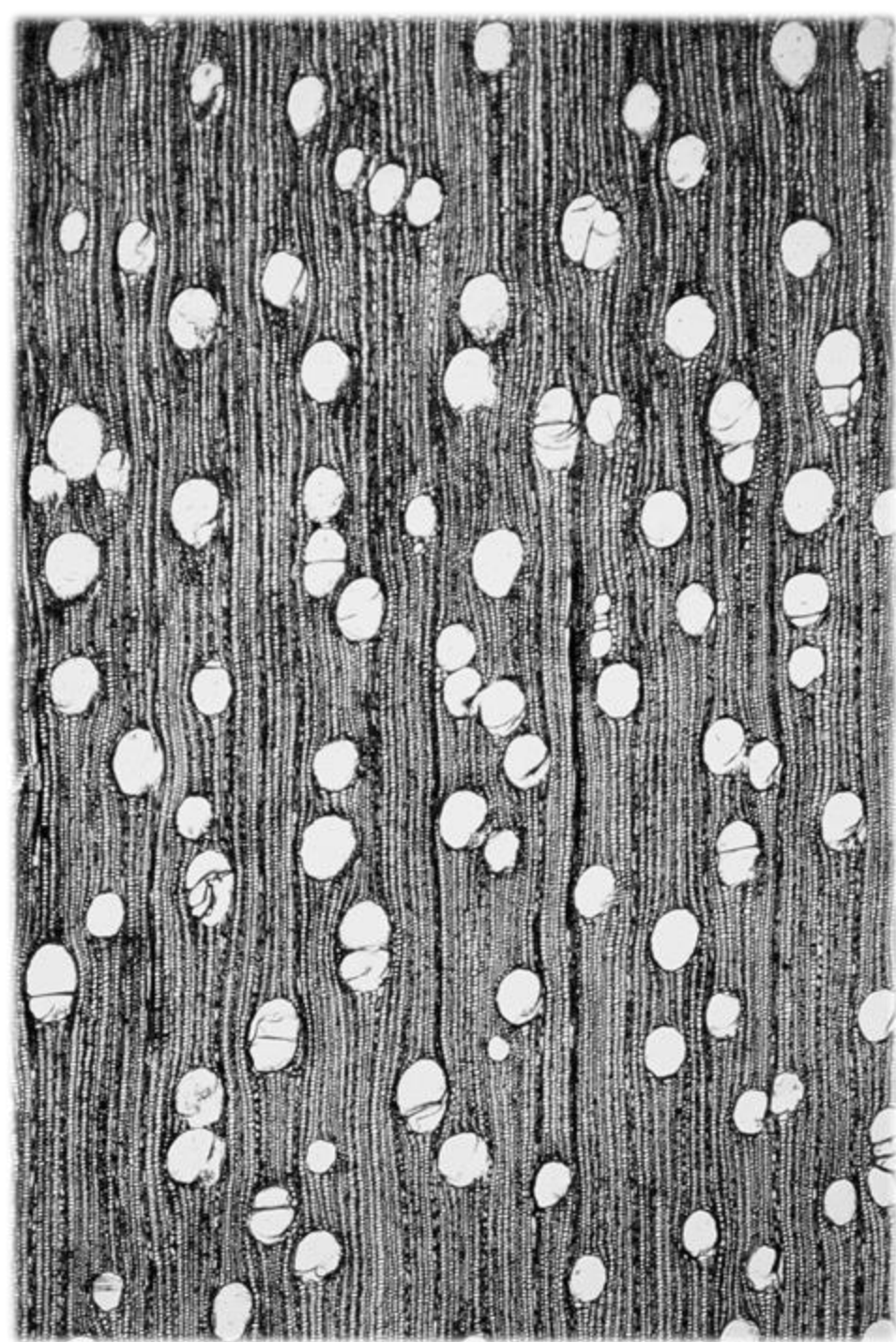
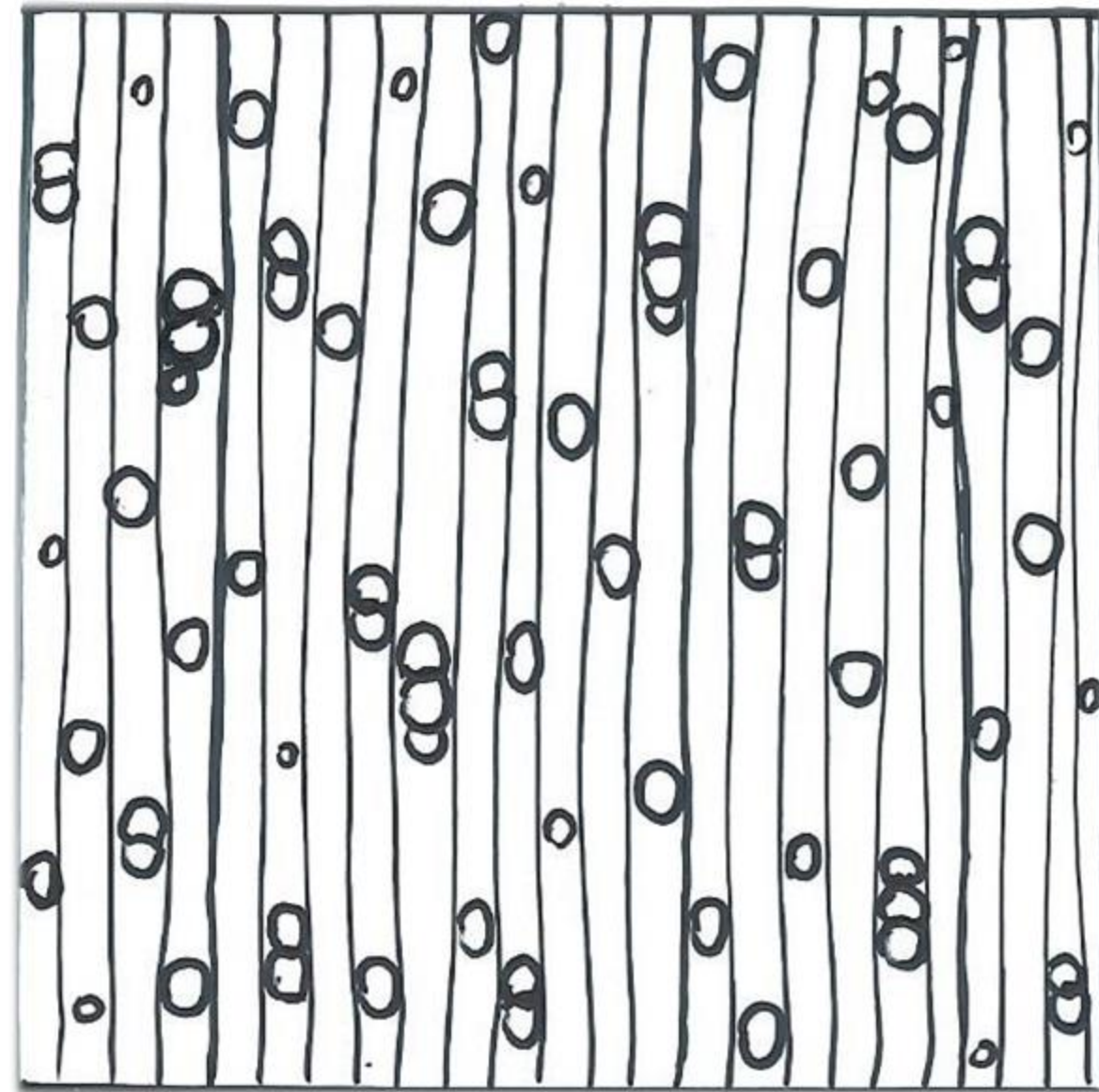
Juglandacées / Juglans regia / Noyer
Photo : L.Y.T. Westra



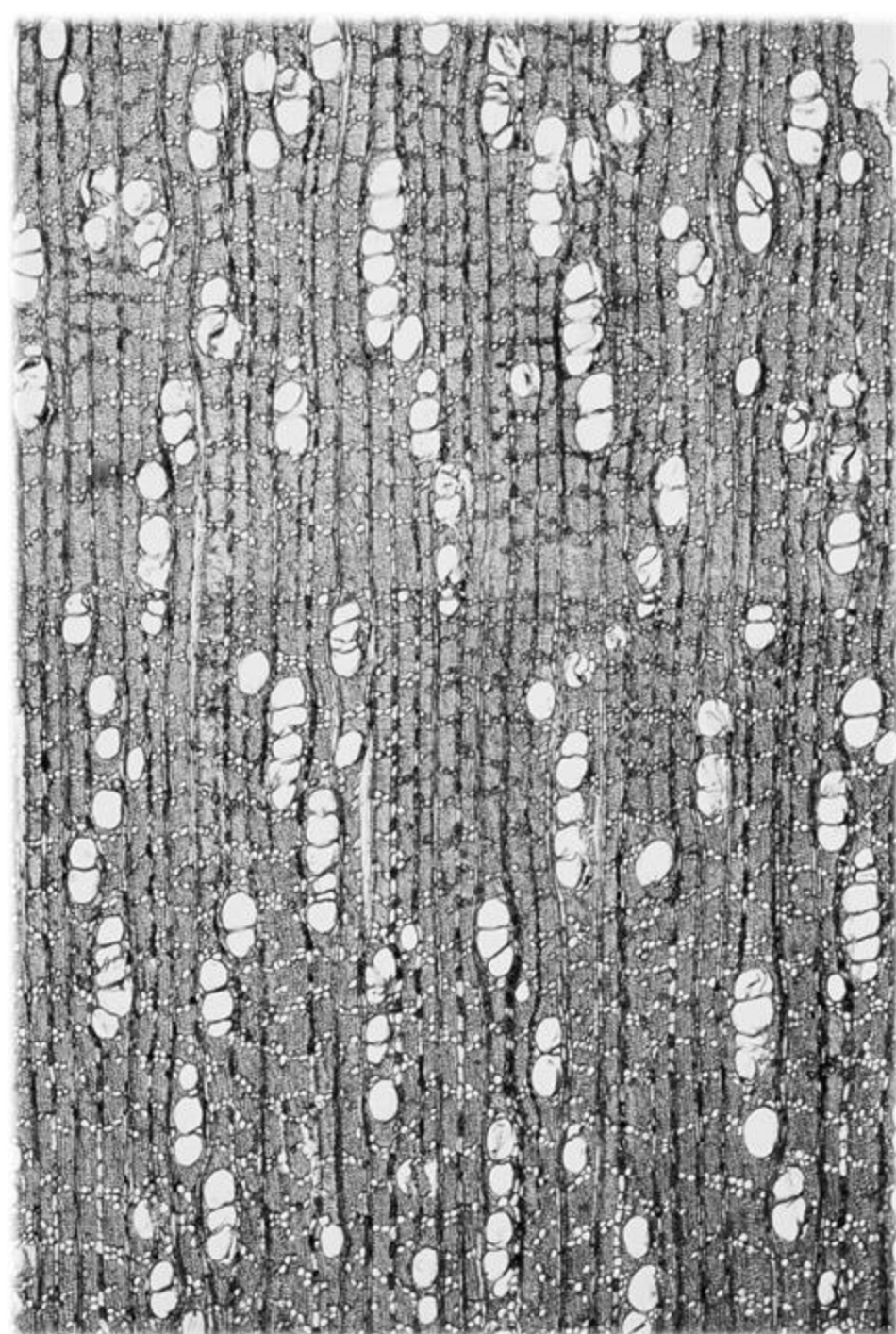
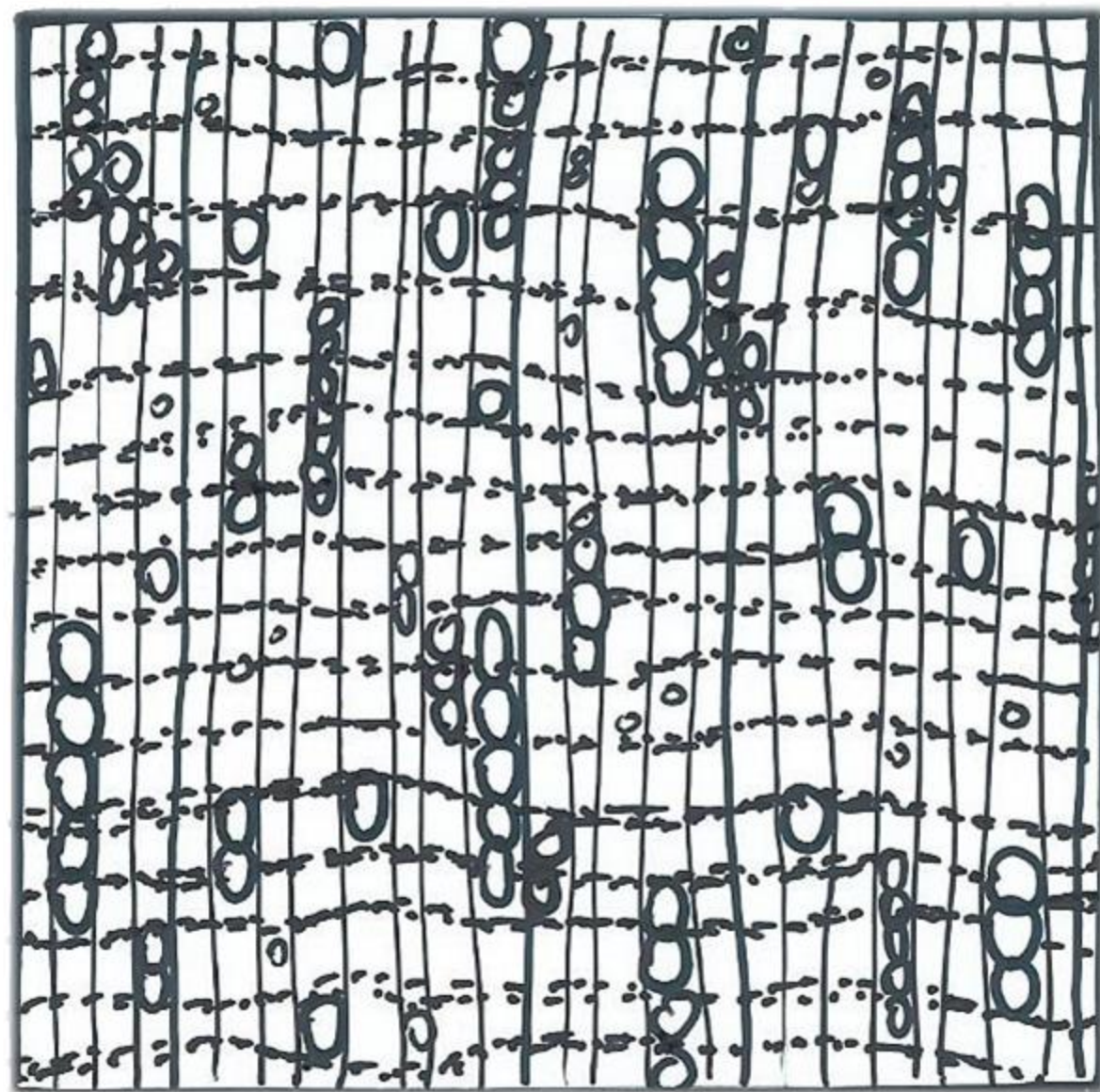
Diptérocarpacées

***Shorea negrosensis* / Méranti**

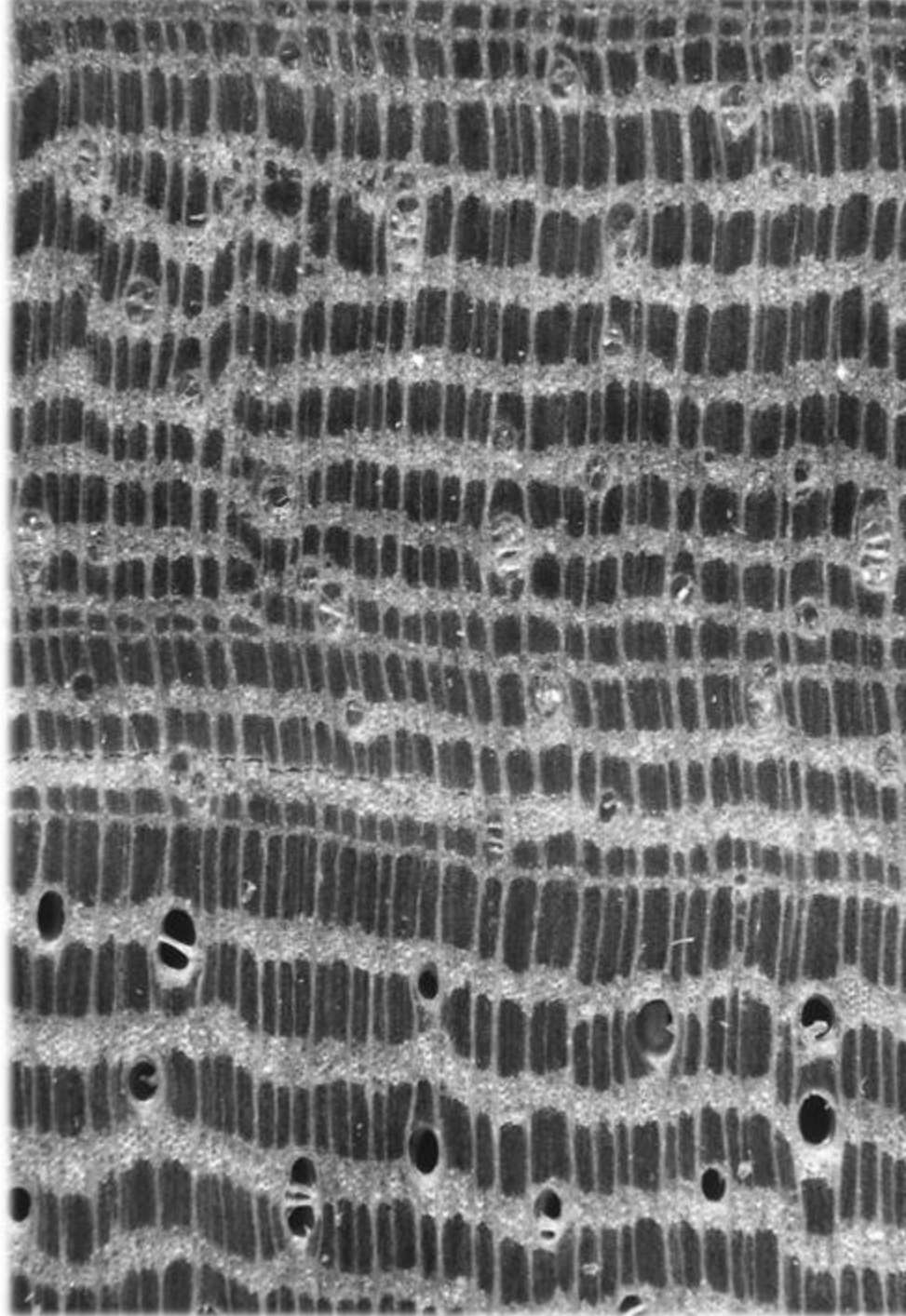
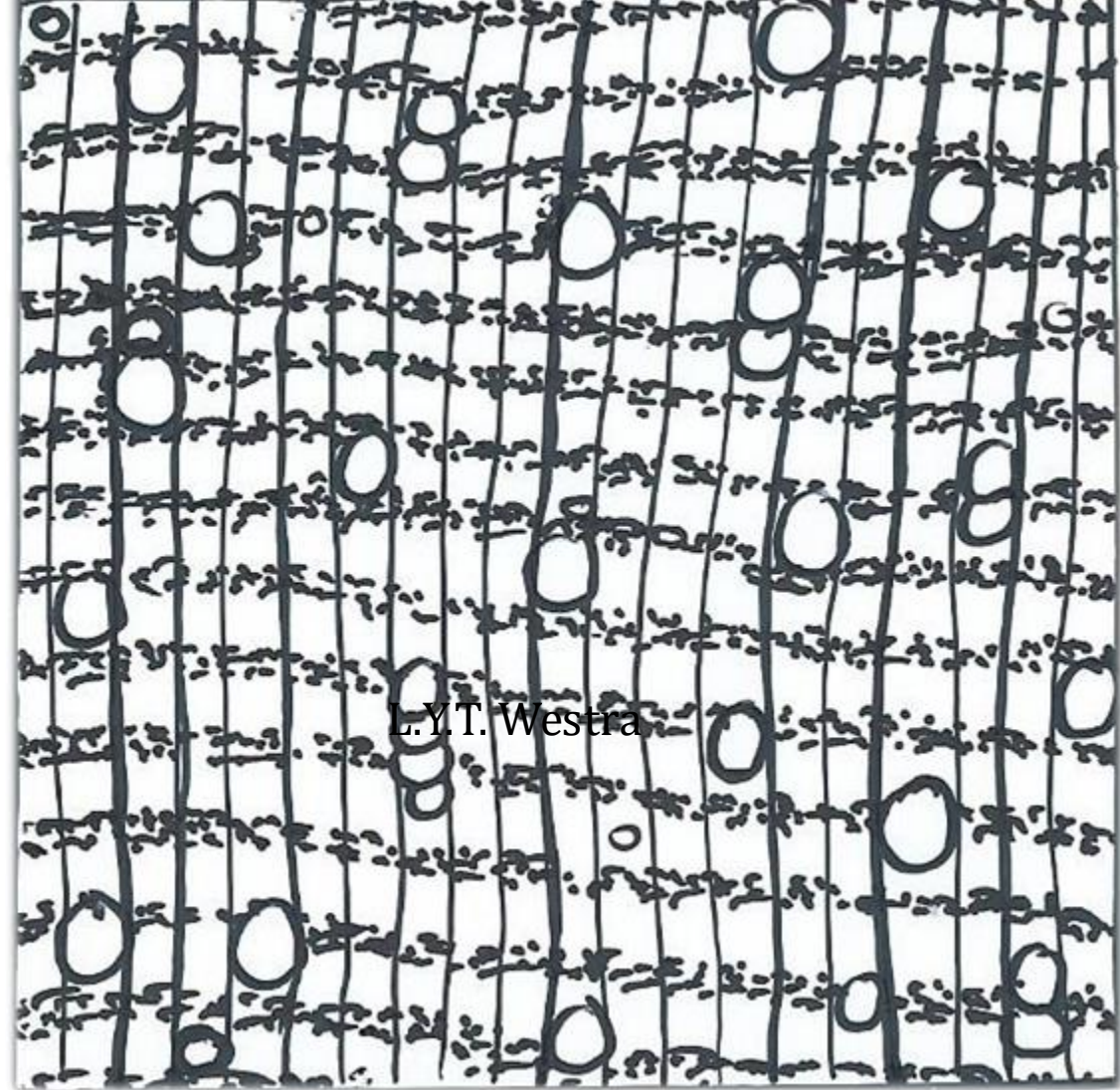
Photo : Hans Beeckman



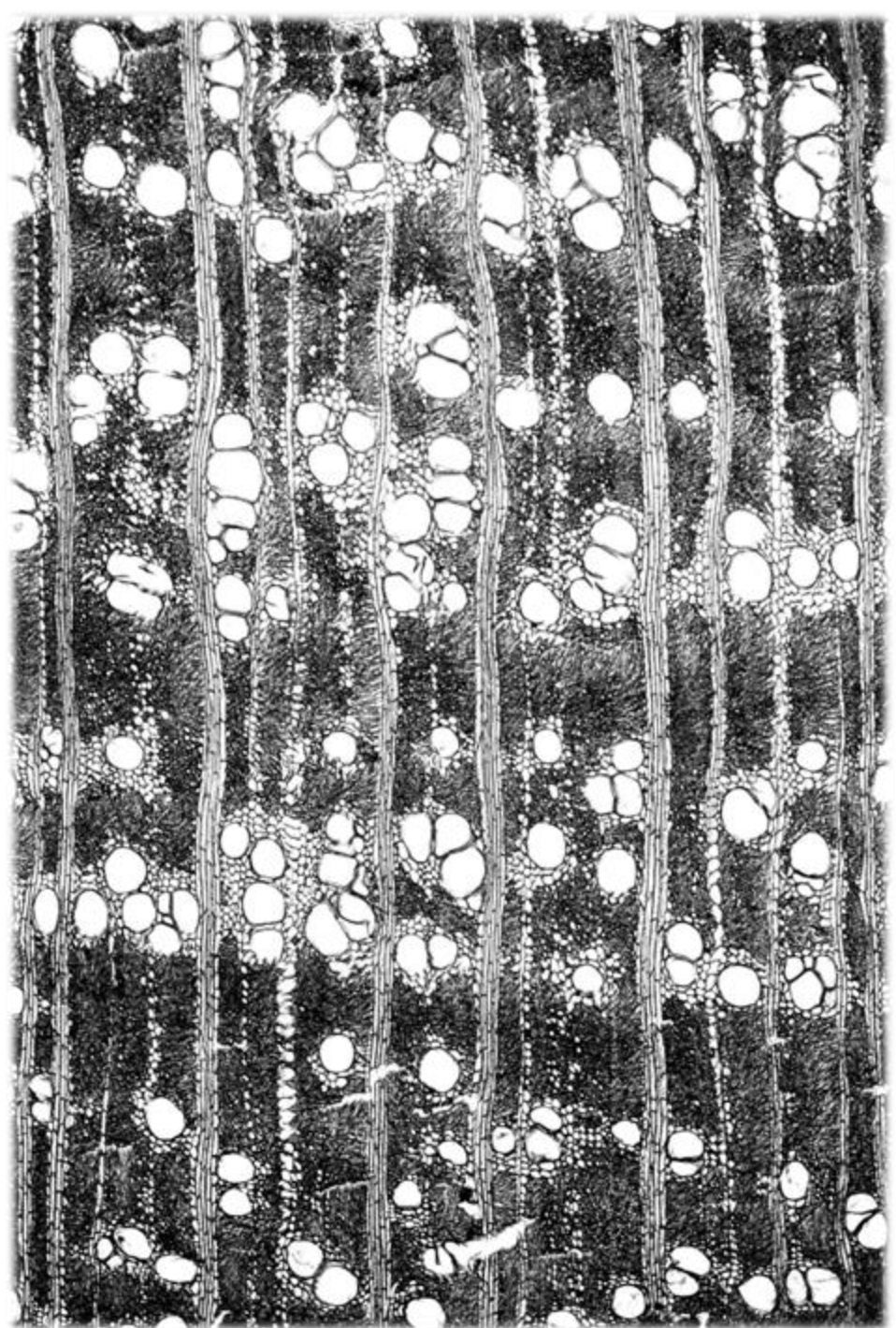
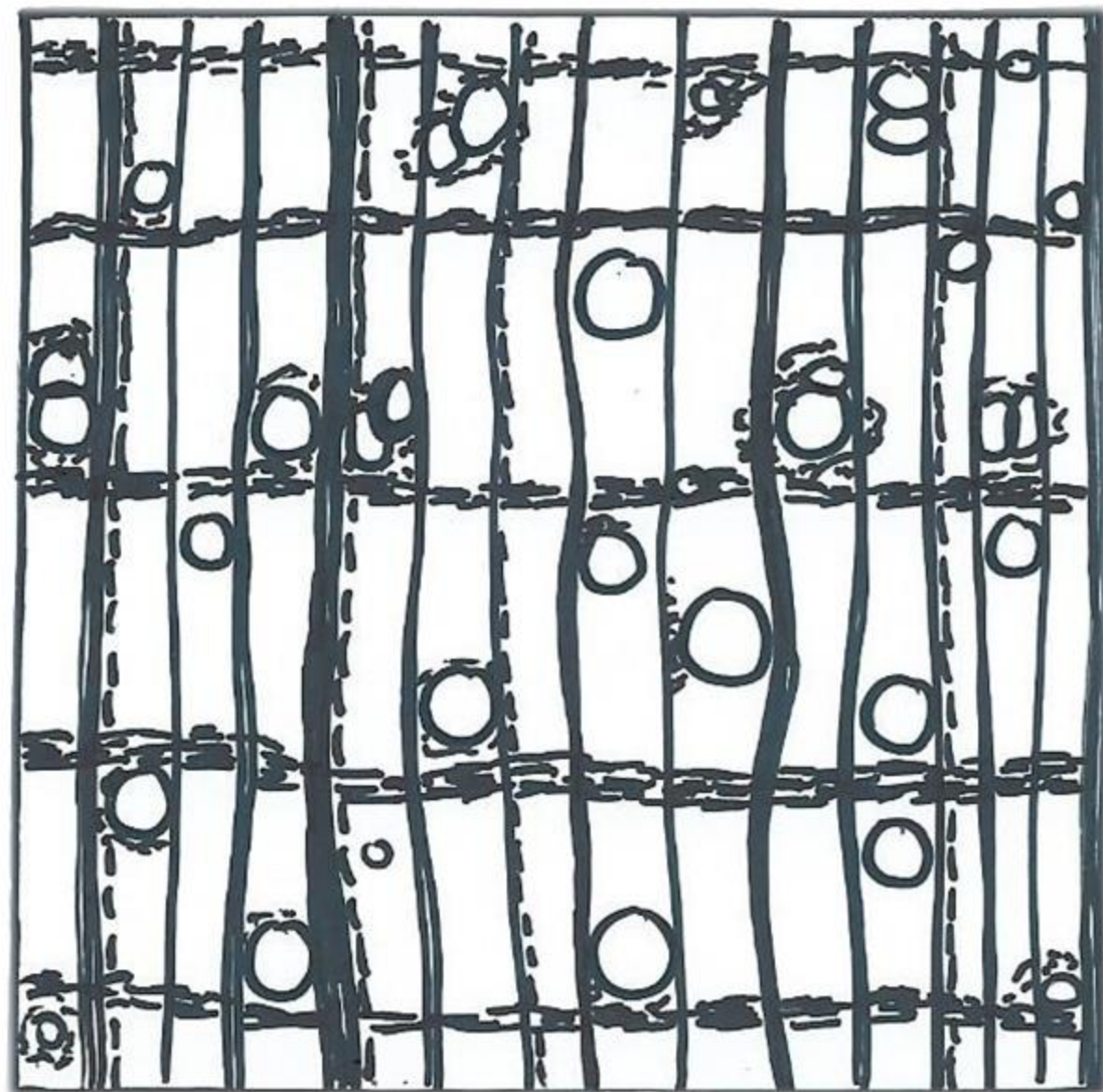
**Burseracées / *Aucoumea klaineana*
Okoumé / Photo : Hans Beeckman**



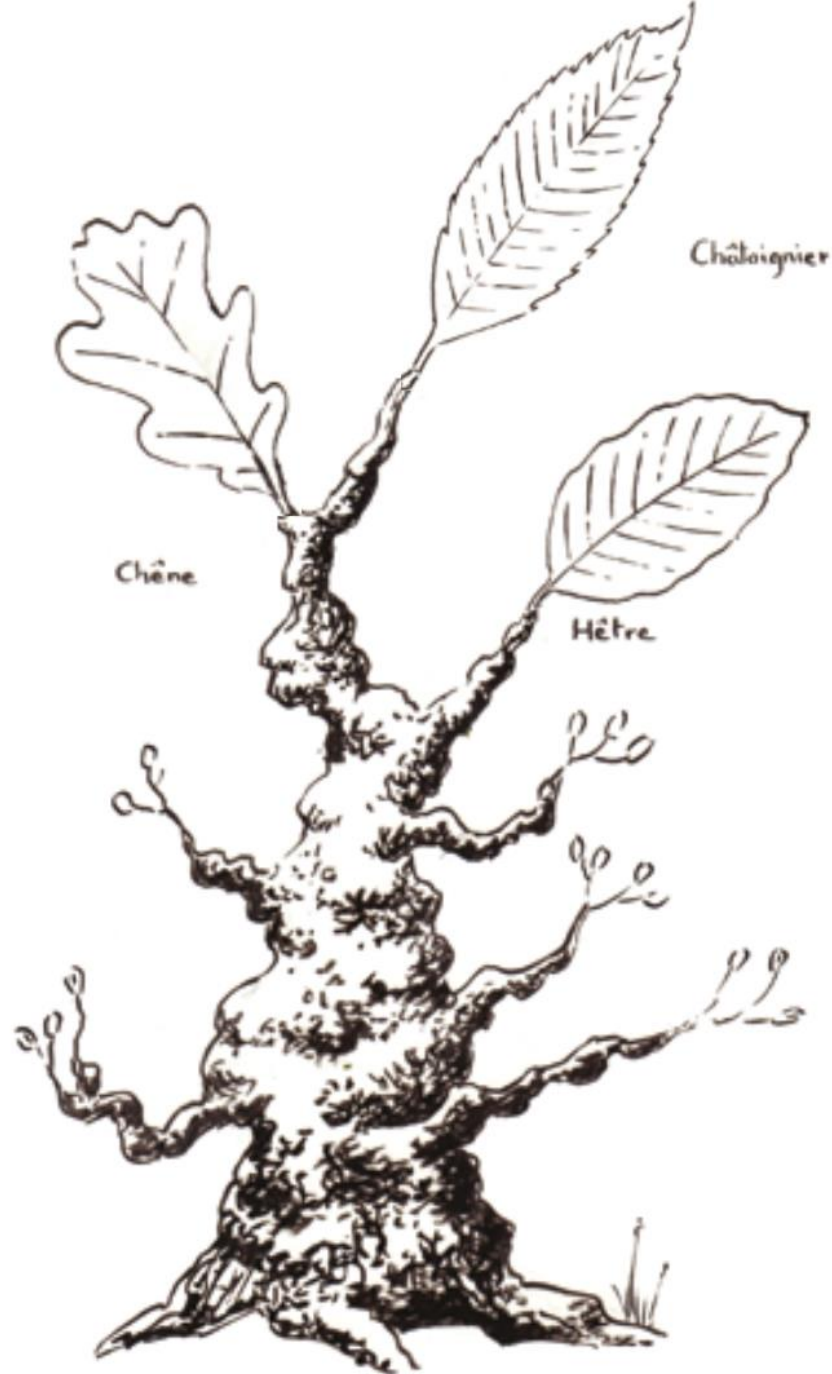
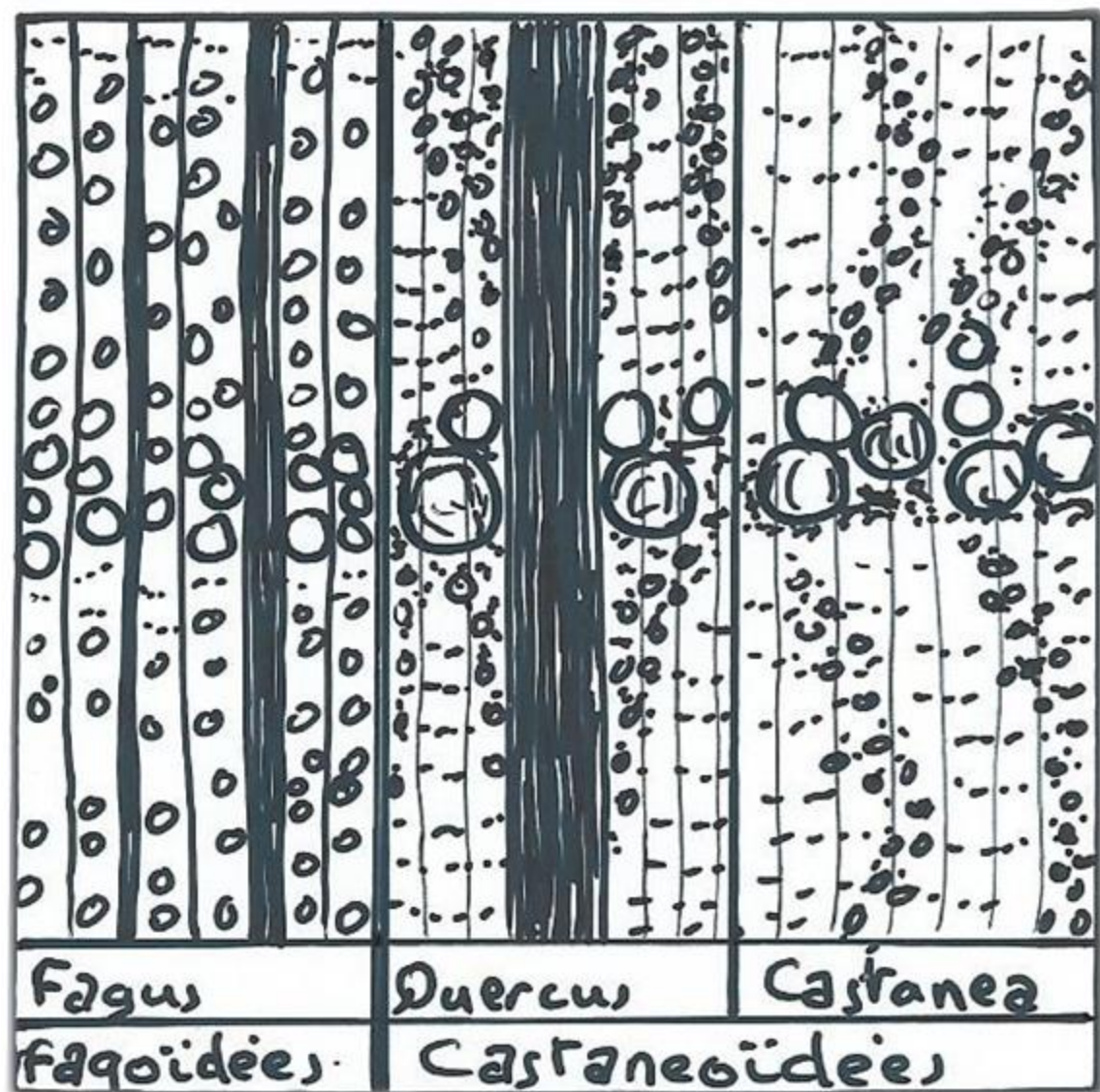
**Sapotacées / *Baillonella toxisperma*
Moabi / Photo : Hans Beeckman**

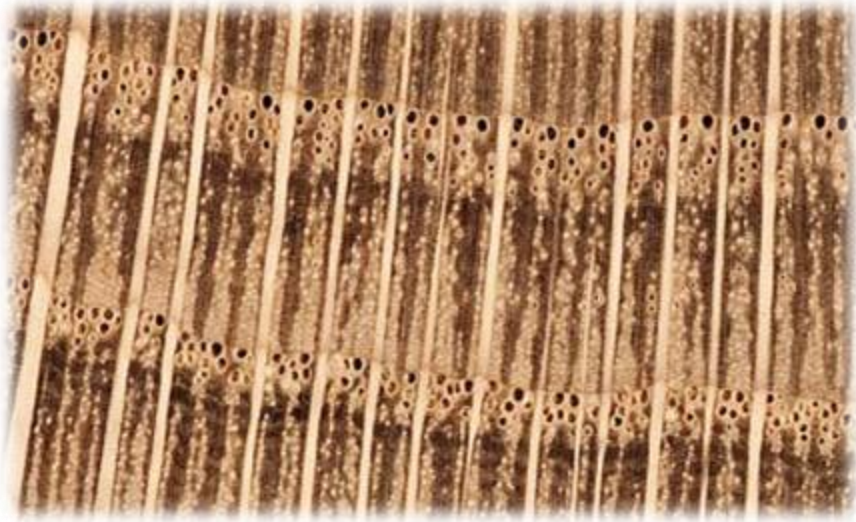


Lécythidacées / *Lecythis chartacea*
Maho rouge / Photo : L.Y.T. Westra



Boraginacées / *Cordia trichotoma*
Freijo /Photo : Hans Beeckman

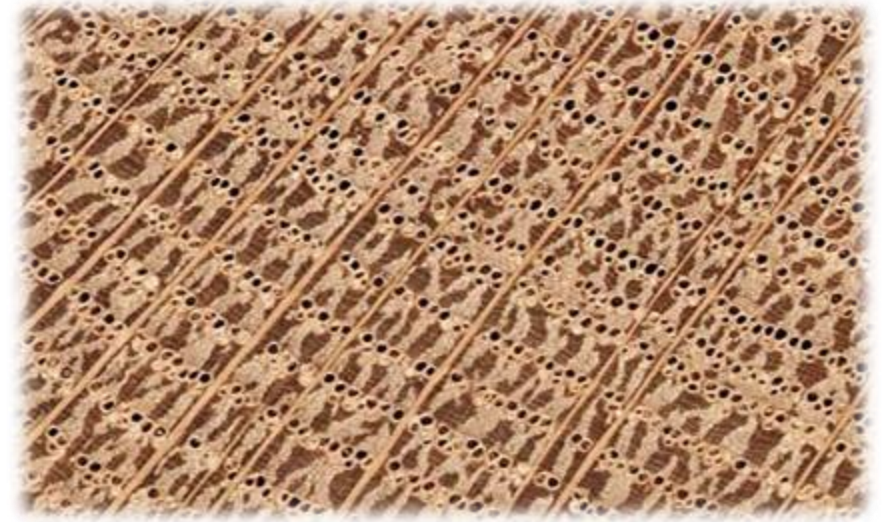




La variabilité :

Le chêne « *Quercus sp* » coupe transversale x4

En lisière
(cernes larges)



Au cœur de la forêt
(cernes étroits)



Lisibilité des échantillons de bois

Lisibilité des échantillons de bois, sur les 3 plans ligneux





Collection de la Xylothèque par Famille



Collection de la Xylothèque par Région



Fagacées Chêne rouvre d'Europe
Quercus petraea (0)57FAG5.30



Le chêne « *Quercus sp.* » Laboratoire d'anatomie ESB



Xylothèque d'apparat de l'ESB

N°5



« *Malus pumila* »

